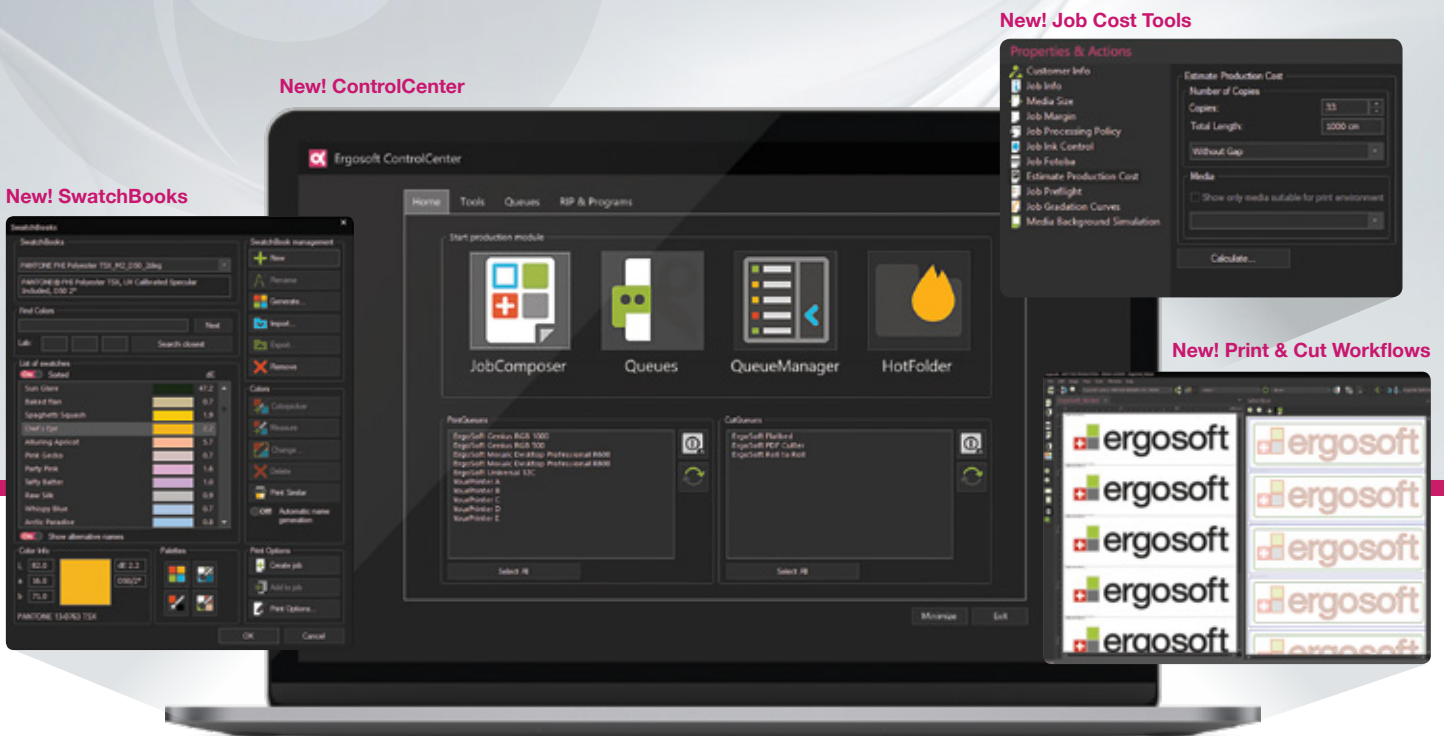




Improved User Interface. Enhanced Production & Workflow.



New! ControlCenter

New! Job Cost Tools

New! SwatchBooks

New! Print & Cut Workflows

Ergosoft 16

With a focus on refinements and improvements related to user interaction with the product, we made basic features more intuitive, and advanced features more accessible.

Ergosoft 16 is a more complete production and workflow suite, with an emphasis on making the job of the RIP operator more efficient.

Learn more at <https://www.ergosoft.net/16>

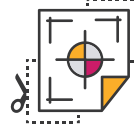


Production & Workflow



Job Costs

- + New CostManager for cost calculations
- + Easily generate & estimate production cost reports
- + Print cost calculation based on m²/ sq ft per hour



Print & Cut Workflows

- + Smart bleed & cut lines
- + Improved print & cut workspace



Production Workflow

- + Job Presets for faster production of repeat work
- + New PrintQueue design for flexible job data display



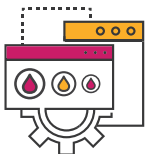
Improved User Experience

ControlCenter

- + Launch modules & access features from one simple home screen
- + Home Tab: JobComposer, Print & Cut Queues, Queue Manager, Hot Folder
- + Queue Tab: Setup & Advanced Configuration
- + Tools Tab: CostManager, Access Rights, Maintenance Tool
- + RIP & Programs Tab: RIP Engines & Optional Features

Floating Licensing

- + One physical dongle for all Ergosoft product within a LAN
- + Works for multiple stand-alone work stations

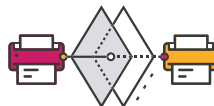


Color Control



Swatchbooks

- + New palette windows & blending tools
- + Predictive Delta-E
- + PANTONE® libraries included



Target Printer Simulation

- + New target printer simulation for proofing / preflight