

Ergosoft 16

Update From Version 15 Now!



Version 15



Ergosoft 16

Improved User Interface. Enhanced Production & Workflow.

With a focus on refinements and improvements related to user interaction with the product, we made basic features more intuitive, and advanced features more accessible. Ergosoft 16 is a more complete production and workflow suite, with an emphasis on making the job of the RIP operator more efficient.

Learn more at www.ergosoft.net/16

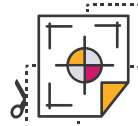
Highlights



- + New ControlCenter
- + PrintEnvironment creation wizard
- + New online documentation portal



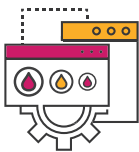
- + Revamped "Job Cost" function New CostManager dialog
- + Cost estimation directly within the job



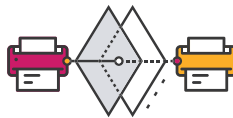
- + Improved "Live-Cut-Path" preview
- + More supported cut paths
- + New "Smart Bleed & Cut Lines" feature



- + Job layout automation with new JobPresets
- + Reinvented PrintQueue design
- + New QueueManager



- + Assign complete SwatchBooks for automatic Spot Color Replacement
- + Use Tolerance Values for Color Replacement
- + Support of additional industry linearization standards



- + Enhanced "Target Printer Simulation"
- + Integrated PANTONE® libraries
- + New palette windows & blending tools to create "similar colors"
- + Search "closest color" in Colorbooks by color values Predictive Delta-E (dE)



- + Simplified User Interface
- + Easier access to more functions
- + Floating-Network-Licensing

Update Paths

Version 15
Essential



Ergosoft 16
Essential

Contact us!

Version 15
Production



Ergosoft 16
Production

Contact us!

Version 15
Options



Ergosoft 16
Options

Transfers FREE

Version 15
Drivers



Ergosoft 16
Queues

Transfers FREE

Update and Save!

Until End of
2019

10% "Early Adopter
Discount" on updates for
existing Version 15 users!*

Contact your Ergosoft dealer now!
or
[Register your Version 15 license at Ergosoft for more information!](#)



© Ergosoft AG | ergosoft.net/16

PANTONE® is the property of Pantone LLC

*Discount does not apply to options or print queues