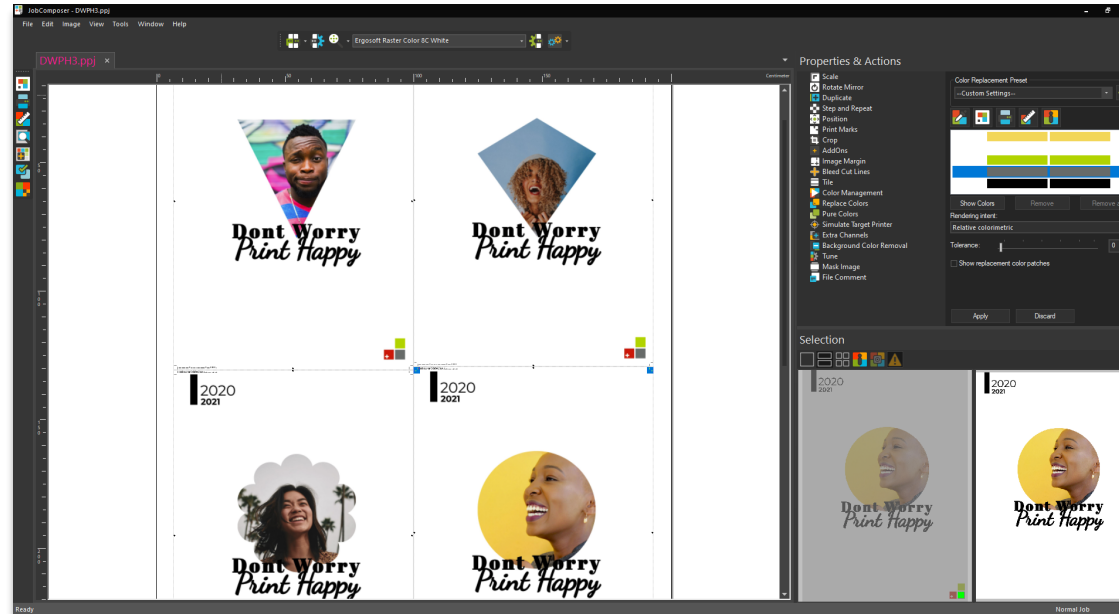




Ergosoft + HP Latex
A winning combination!

Certified for
HP Latex 700/800
Printer series





Ergosoft JobComposer

Highlight Focus: White Ink & Cut

- Extra Channel Technology
Automatic Generation of White Layer
Print & Measure White Gradient
- Job Composing Technology
Image Editing, Job Composing, Cut,
Sandwich- and other HP White Modes
including White previews
- Colored Media Technology
Background Color Removal Features
- Automation Technology
Click & Print! Workflows

Extra Channel Technology
Automatic Generation of White Layer



Extra Channel Technology

Automatic Generation of White Layer

10 different modes
for White Layer
Generation

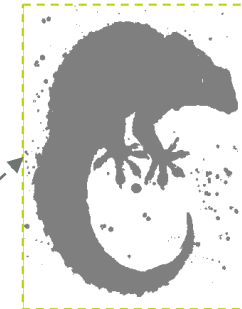
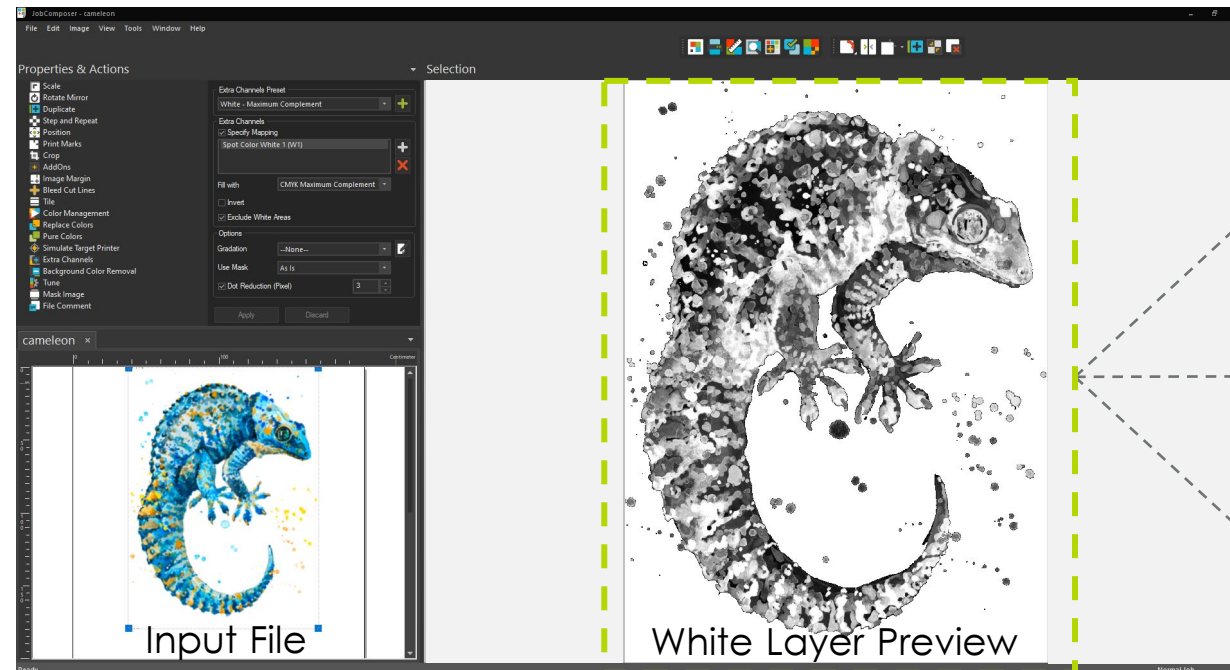
Invert Mode and
Exclusion of White
Areas

Gradation Curves,
Use Mask, and Dot
Reduction Options

Manage multiple
Extra Channels
(e.g. White &
Varnish) per file

Create powerful
Presets for “Click &
Print” automation

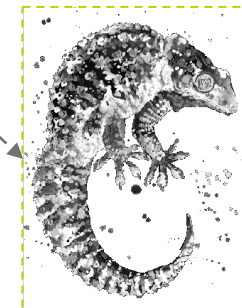
Ergosoft JobComposer



Full Background,
Exclude White
Areas



CMYK Maximum
Compliment,
Exclude White
Areas



Lightness,
Exclude White
Areas

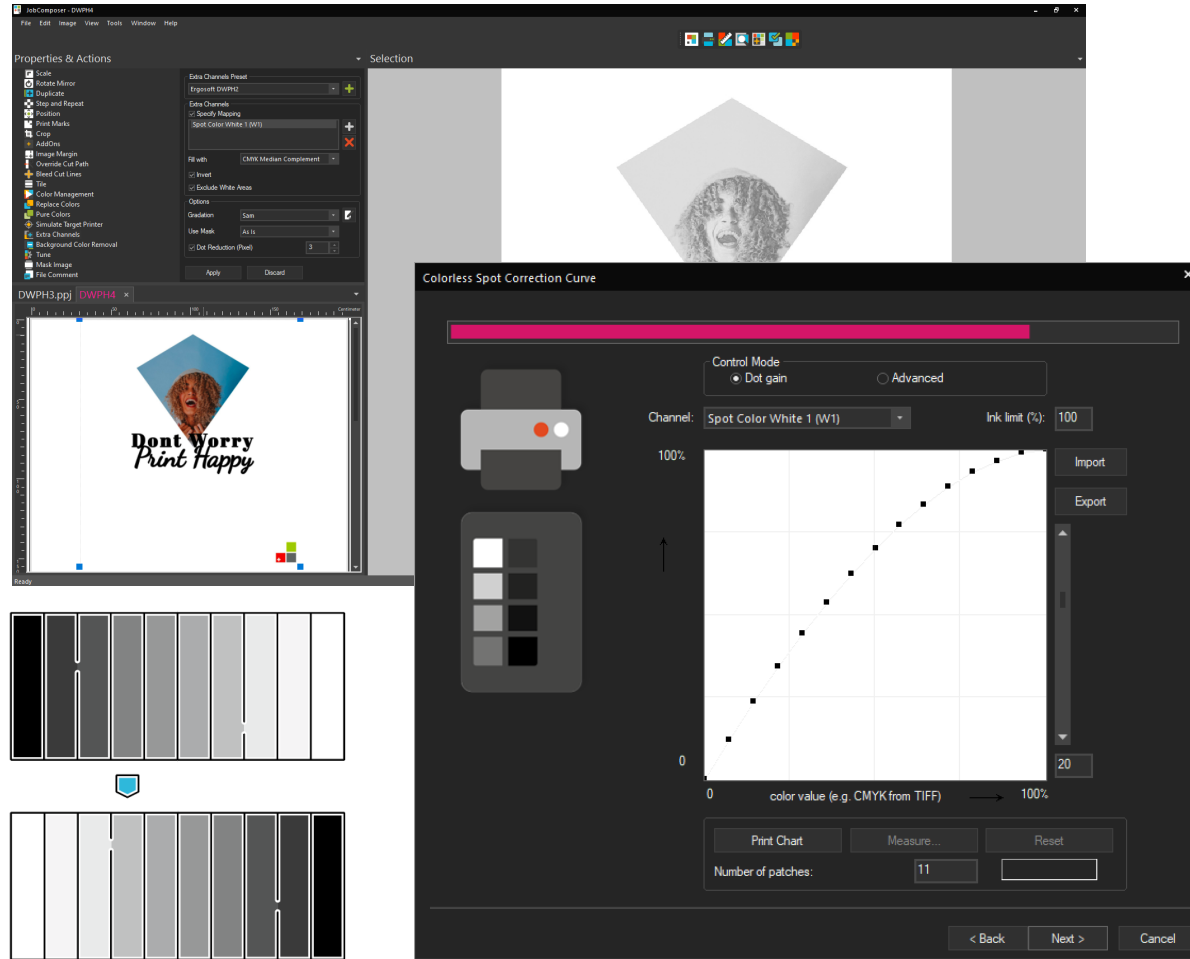
White Channel Technology
Print & Measure White Gradient



White Channel Technology

Print & Measure White Gradient

Ergosoft JobComposer



Spot White Correction Curve for Print Environment

- Print & Measure White specific Gradient Calibration Charts
- Control Number of Patches per Chart for best results
- Control maximum Ink limit (%) for optimum coverage
- Control Curve by Dot Gain or manual Advanced mode
- Chart Geometries for all supported Measurement Devices

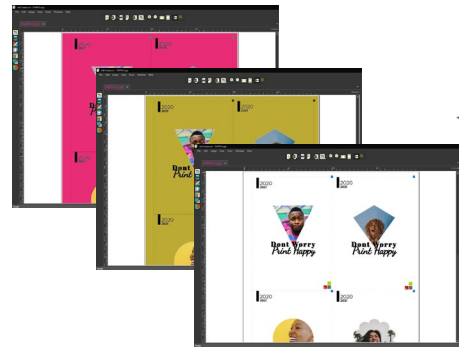
Colored Media Technology
Background Color Removal Features



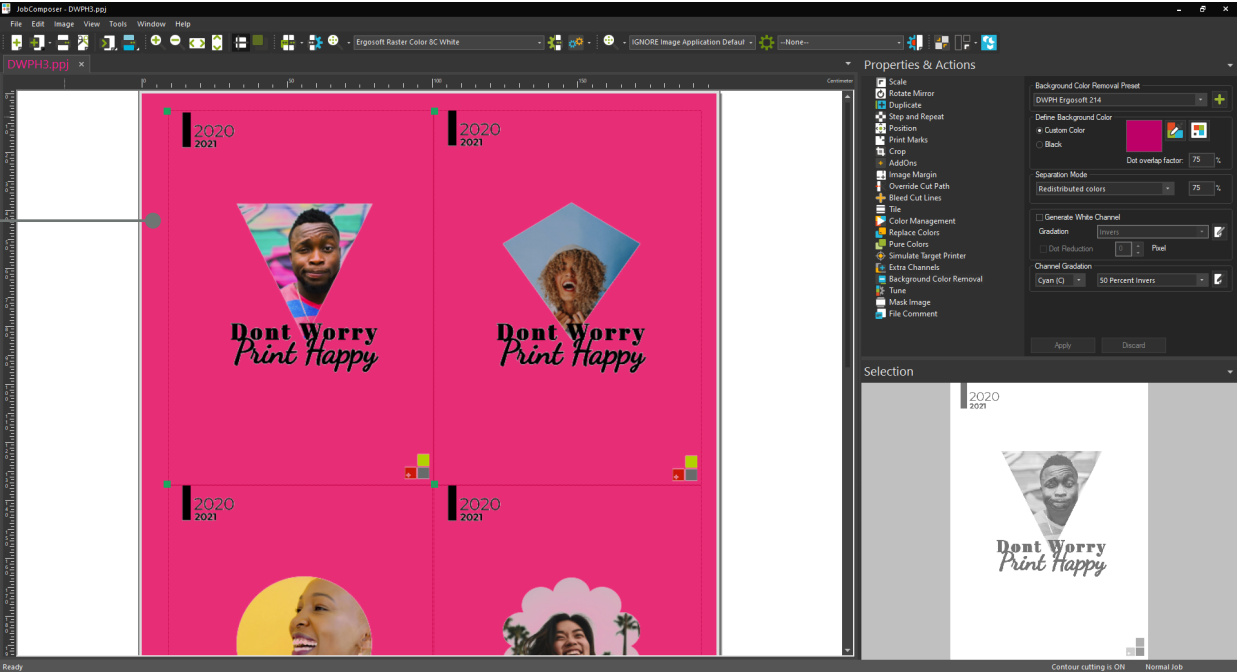
Colored Media Technology

Background Color Removal Features

Ergosoft JobComposer



Simulate Colored Media Background in the JobComposer



- Precisely Define Colored Media with Exact Values
- Combine with White Layer Generation
- Quick and Easy Preset for Black Media
- Immediate Ink Savings
- Create powerful Presets for “Click & Print” automation



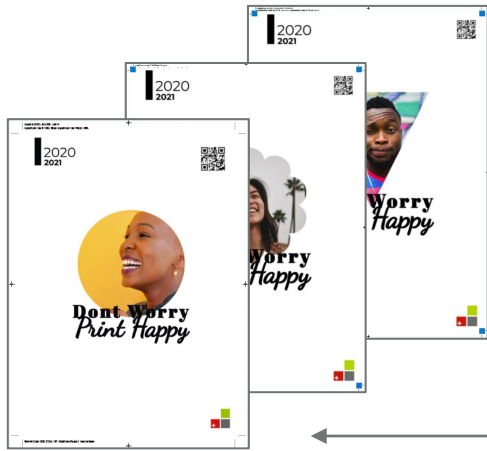
Job Composing Technology
**Image Editing, Job Composing, Cut,
Double-sided “Sandwich” printing & White Preview**



Job Composing Technology

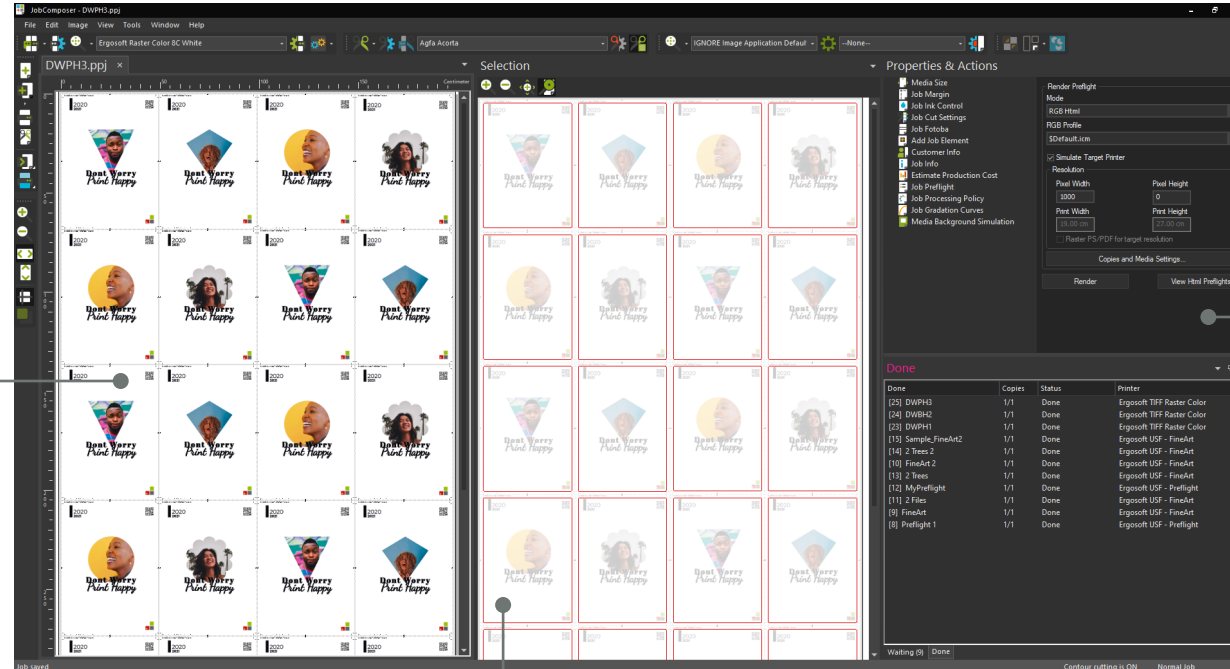
Image Editing, Job Composing, Cut

Ergosoft JobComposer



Realtime Image Editing:

- AddOns (e.g. QR Codes)
- Generate Bleed & Cut Lines
- Crop, Scale, Tile, Rotate, etc.
- Replace Colors
- And many more...



Realtime, High Resolution WYSIWG Preview

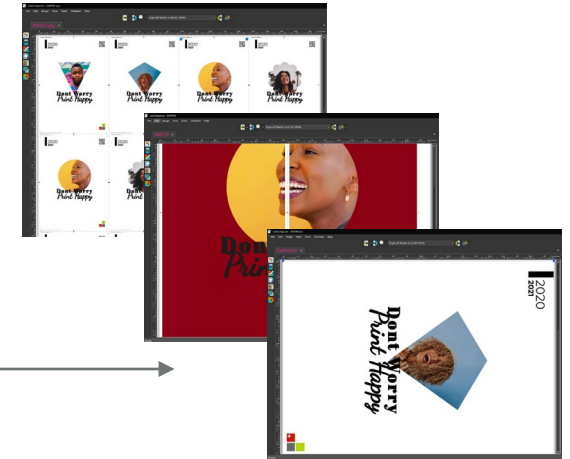
Cut Path Generation and Preview

Access to Queues



Cut

- Multiple Cut Paths per Image
- Generate Cut Paths from Image Data
- Cut Image Border
- Job Cut Presets
- Individual Image Settings



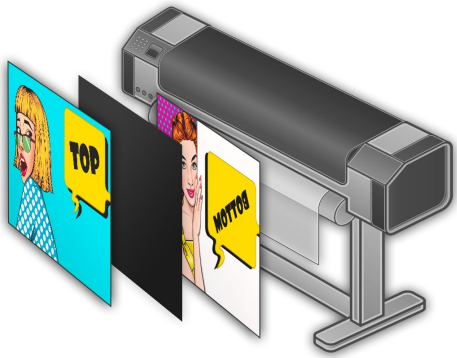
Realtime Job Composing:

- Realtime Image Positioning
- Image Nesting
- Job Preflight
- And many more...

Job Composing Technology

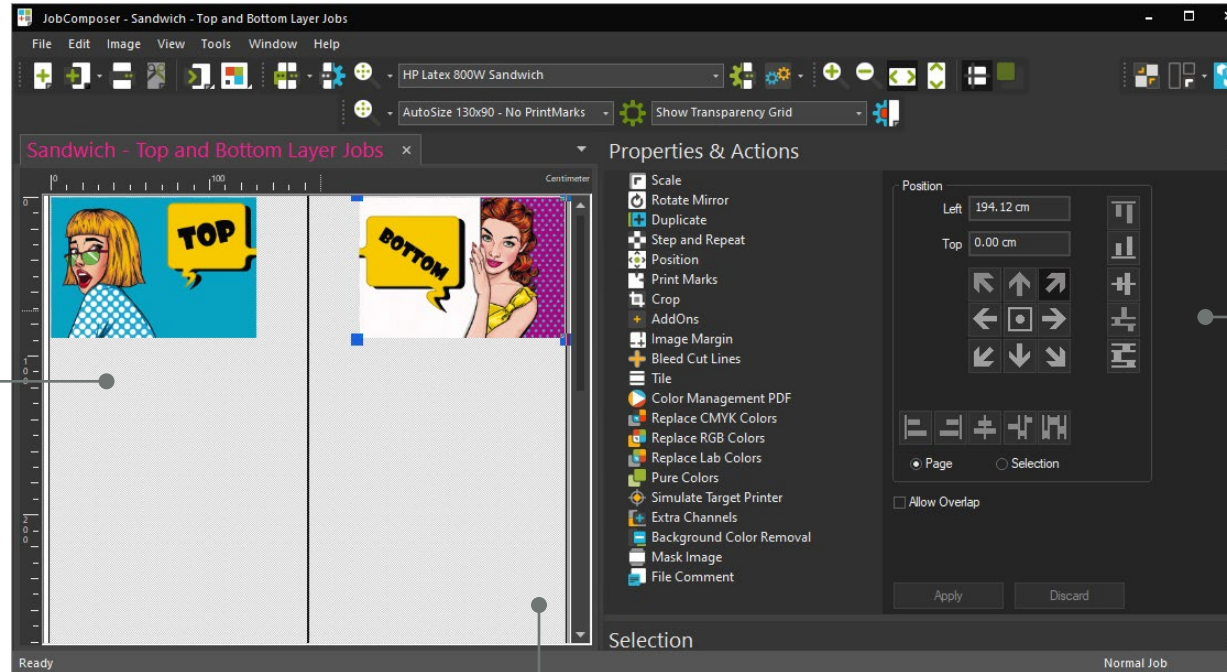
Sandwich- and other HP White Modes including White previews

Ergosoft JobComposer

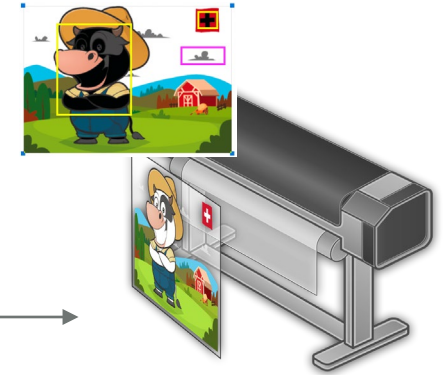


Advanced "Sandwich" Modes

- Create sophisticated "Sandwich" jobs using maximum JobComposer functionality for all images and layers.
- Manage multiple images per job.



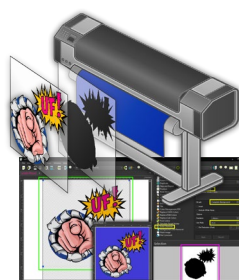
Realtime, High
Resolution WYSIWG
Preview



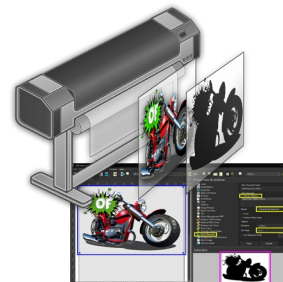
Custom White Preview

- Select a custom color to preview white areas during the composing process.

Underflood (UF)



Overflood (OF)



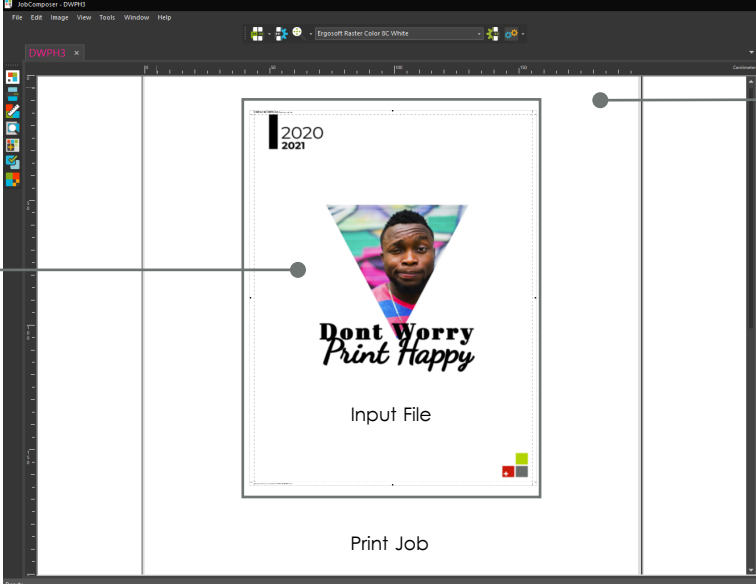
Automation Technology
Click & Print! Workflows



Automation Technology

Click & Print! Workflows

Ergosoft JobComposer



The screenshot shows the Ergosoft JobComposer interface. A central preview window displays a print job with a photo of a man, the text "2020 2021", "Dont Worry Print Happy", and "Input File". The interface is divided into three main sections by vertical lines. Arrows point from descriptive text blocks to these sections: "Image Presets" points to the left section, "Job Presets" points to the right section, and "Workflows" points to the bottom section.

Image Presets

Save all individual settings of an image as "Presets" and combine them into an "Image Preset".

Load the next image, apply the "Image Preset" and Print!

Job Presets

Save all individual settings of a Job as "Presets" and combine them into a "Job Preset".

Load the next Job, apply the "Job Preset" and Print!

Workflows

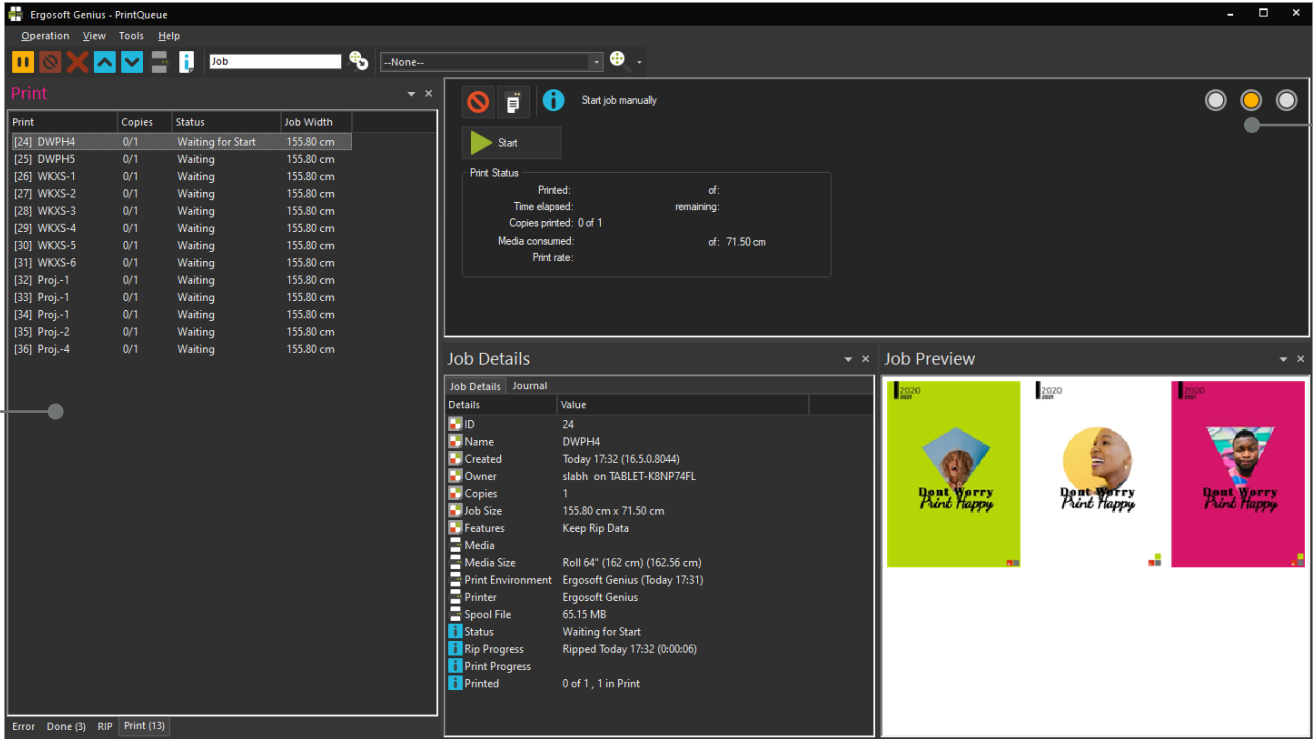
Ergosoft enables you to combine Image Presets, Job Presets and Print Environments into a Click & Print Workflow to minimize time spent in individual image editing and preparation.

Production
PrintQueues & QueueManager



Production PrintQueues

Ergosoft PrintQueues (per printer)



Production Control & Status Monitor

Set a PrintQueue to Offline, Online or Manual to control the data stream to your printer.

Activate Status Monitor for more printer details.

Optimized Queuing

The tabbed Queues allow fast navigation between Done, Ripping or Printing Jobs.

Control priority, create JobTicket or adjust number of copies.

Filter and Search functions enable you to manage larger job lists.

Job Details & Preview

Easily identify a job via preview. Review production details and production journal.



Production QueueManager

Ergosoft QueueManager (complete JobQueue)

Custom Filter, Search

Create custom filters and have them available as preset for fast filtering of the complete JobQueue.

Use the text search to find specific jobs easily.

The screenshot displays the Ergosoft QueueManager application window. The main area is a table listing jobs with columns for ID, Name, Status, and Time. A search bar is located at the top left. On the right, a 'Job Details' panel shows information for a selected job, including its name, status, and a preview of the print output. The interface is dark-themed and includes a menu bar at the top.

| ID | Name | Status | Time |
|------|----------------------------|----------|-----------------|
| [56] | ProdA-Proj23-X2205 | 1/1 Done | Today 06:44 |
| [53] | ProdA-Proj23-X2302 | 1/1 Done | Today 06:44 |
| [54] | ProdA-Proj23-X2304 | 1/1 Done | Today 06:44 |
| [53] | ProdA-Proj23-X2304 | 1/1 Done | Today 06:44 |
| [50] | ProdA-Proj23-X2228 | 1/1 Done | Today 06:44 |
| [51] | ProdA-Proj23-X2301 | 1/1 Done | Today 06:44 |
| [48] | ProdA-Proj23-X2227 | 1/1 Done | Today 06:44 |
| [48] | ProdA-Proj23-X2227 | 1/1 Done | Today 06:44 |
| [47] | ProdA-Proj23-X2226 | 1/1 Done | Today 06:44 |
| [46] | ProdA-Proj23-X2225 | 1/1 Done | Today 06:44 |
| [45] | ProdA-Proj23-X313 | 1/1 Done | Today 06:43 |
| [44] | ProdA-Proj23-X312 | 1/1 Done | Today 06:43 |
| [43] | ProdA-Proj23-X204 | 1/1 Done | Today 06:43 |
| [41] | ProdA-Proj23-X205 | 1/1 Done | Today 06:43 |
| [40] | ProdA-Proj23-X203 | 1/1 Done | Today 06:43 |
| [39] | ProdA-Proj23-X202 | 1/1 Done | Today 06:43 |
| [38] | ProdA-Proj23-X201 | 1/1 Done | Today 06:43 |
| [23] | DWP43 | 1/1 Done | Yesterday 17:34 |
| [22] | DWP42 | 1/1 Done | Yesterday 17:33 |
| [21] | DWP41 | 1/1 Done | Yesterday 17:33 |
| [14] | DWP43 | 1/1 Done | Yesterday 16:41 |
| [13] | DWP43 - 1 | 2/2 Done | Yesterday 16:41 |
| [12] | DWP43 | 1/1 Done | Yesterday 16:40 |
| [11] | DWP42wb | 1/1 Done | Yesterday 16:36 |
| [10] | DWP42wb | 1/1 Done | Yesterday 16:31 |
| [9] | DWP42wb - Job1 | 1/1 Done | Yesterday 16:30 |
| [8] | Dont Worry Print Happy - 2 | 1/1 Done | Yesterday 16:24 |
| [7] | Dont Worry Print Happy - 2 | 1/1 Done | Yesterday 16:24 |
| [6] | Dont Worry Print Happy - 2 | 1/1 Done | Yesterday 16:24 |
| [5] | Dont Worry Print Happy - 1 | 1/1 Done | Yesterday 16:24 |
| [4] | Dont Worry Print Happy - 1 | 1/1 Done | Yesterday 16:24 |
| [3] | Dont Worry Print Happy - 1 | 1/1 Done | Yesterday 16:24 |
| [2] | Dont Worry Print Happy - 1 | 1/1 Done | Yesterday 16:24 |

Job Details Panel:

- ID: 72
- Name: Prod212-Proj102-Y102-03
- Created: Today 06:47 (16.5.0.8044)
- Owner: slash on TABLET-KSNP74FL
- Copies: 1
- Job Size: 51.90 cm x 71.50 cm
- Features: Keep Rip Data
- Media: Roll 64" (162 cm) (162.56 cm)
- Media Size: Roll 64" (162 cm) (162.56 cm)
- Print Environment: Printer 2 - Media A - Quality Fast (Today 06:18)
- Printer: Printer 2
- Spool File: 18.77 MB
- Status: Waiting for Start
- Rip Progress: Ripped Today 06:47
- Print Progress: 0 of 1, 1 in Print

Job Preview:

Print/CutQueue:

| Print/CutQueue | Online | Media | Width | Job | Print Ma |
|----------------|--------------|-------|---------|------|----------|
| Printer 1 | Manual Start | | 0.00 cm | [57] | TABLET |
| Printer 2 | Manual Start | | 0.00 cm | [72] | TABLET |

JobDetails, Preview

Easily identify a job via preview. Review production details and production journal.

Production Overview

The fully customizable QueueManager allows you to show and filter the complete JobQueue. Manage even large production queues with the tabbed view feature.



Ergosoft + HP Latex
A winning combination!

Certified for
HP Latex 700/800
Printer series



