



Ergosoft 16

Highlights



How to read the Highlights

General	This Highlights document features three chapters: Production & Workflow, Usability, Color & Color Control.
Summary	The “Summary” section of each chapter gives a high-level summary of new or enhanced features.
Details	The “Details” section of each chapter adds more technical details about new or enhanced features.
[16.1]	Indicates tools and features that have been introduced or enhanced with release 16.1
[16.2]	Indicates tools and features that have been introduced or enhanced with release 16.2.
[16.3]	Indicates tools and features that have been introduced or enhanced with release 16.3.
[16.4]	Indicates tools and features that have been introduced or enhanced with release 16.4.
<i>*NEW</i>	Indicates specific features in the “Details” section that have been introduced with Ergosoft 16.





Production & Workflow



Production & Workflow

Summary

JobPresets

[16.1] This is a new feature, which allows the customer to create templates with various pre-defined parameters related to new job creations.

Print & CutQueues

[16.1] These modules have been completely re-designed. The newly-created 'workspaces' feature allows the user to arrange the window panes according to their preferences, and save the layout for future use.

[16.2] Create custom queries to filter jobs and easily switch between queries based on e.g. selected media.

[16.3] Each queue tab shows a counter of the number of listed jobs.

QueueManager

[16.1] The JobCenter is now called QueueManager, and also has been re-designed. Custom workspaces are supported.

Furthermore, the enhanced view filter feature allows to easily switch between views of queues depending on customer queries. Also, the production database export generates an extended production data report.

[16.3] Each queue tab shows a counter of the number of listed jobs.



Production & Workflow Summary

Print & Cut Workflows

[16.1] A new Image Action called Smart Bleed & Cut Lines has been added to the JobComposer.

This allows the user to create contour bleed & cut lines within or around images.

The new Print & Cut workspace includes improved live cut path previews and the support of new cut path origins (PDF boxes, Adobe Photoshop paths, bounding box of grouped images.).

Job Ticket

[16.3] The Job Ticket, accessible through the QueueManager and/or PrintQueues, has been entirely revised. Numerous job production details have been added. The job barcode content, definable under the Job Info, is added as generated barcode to the HTM Job Ticket.

Job Costs

[16.1] The CostManager is a new tool that allows for the centralized management and bulk-editing of all production cost factors.

Overall cost estimation and reporting have been improved.

Expanded feature scope includes:

- Alternative printer cost calculation method (based on printed area, instead of time printed)
- New Job Properties & Actions estimate production cost
- Job Preflight, import & export of customer lists into the RIP
- User-definable currency & metrics

[16.4] The historical data per Job stored in the production database has been extended by aborted versus completed Jobs, active Ergosoft User, media usage ratio, and the media shrinkage factor.



Production & Workflow

Summary

Job Package

[16.3] A function called “Package Job” has been added to the File menu of the JobComposer. It allows the user to create a folder that includes all relevant files to open and reproduce a job at any other location. It also generates and saves a Job Ticket (HTM) and a preview file (JPG) within this “Job Package” folder.

Image Add-Ons & generated Job Elements

[16.3] The Image Add-Ons and generated Job Elements of the JobComposer have been updated and enhanced. New optional barcodes and barcode types (128; EAN-13 = European Article Number) are available. Barcodes can be automatically rotated. Frequently used Job Elements and customized settings can be stored as presets.

Ergosoft Mosaic Desktops Professional

[16.1] In cooperation with the company ZEDOnet, a new range of smaller desktop printers are supported through this program. Approximately 300 models of Epson, Canon and HP have been added.

HotFolder

[16.1] Various enhancements have been implemented to the HotFolder to meet today's requirements of automated workflows.

[16.2] A new function to import/export HotFolder settings simplifies the creation and configuration of HotFolders.

[16.4] The module user interface has been converted to Tabbed Groups framework supporting groups and floating HotFolder windows including recent windows arrangement recovery.

[16.4] Various enhancements, such as support of Drag&Drop, floating HotFolder Windows and, an alternative HotFolder name (friendly name) have been implemented to the HotFolder to meet today's requirements for automated workflows.

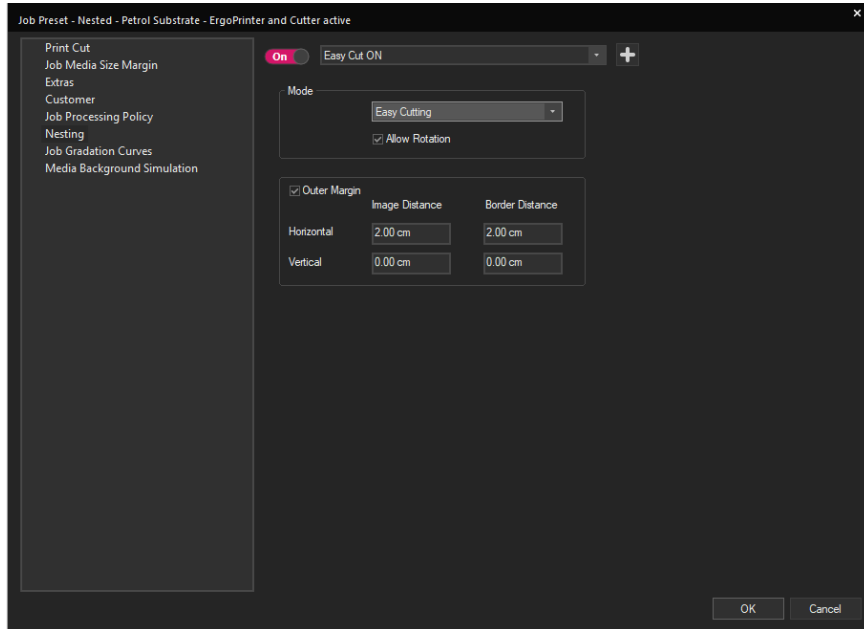
[16.4] A bulk-import simplifies the export of HotFolder settings and the configurations of new HotFolders.

[16.4] The feature scope and error handling of the optional automation interface called <delta> XML has been extended.



JobPresets ^{*NEW}

Details



[16.1] To complete the Preset Suite, a composite preset called JobPreset has been added.

The JobPresets allow the user to define numerous parameters of a Job and store them for easy access in the future.

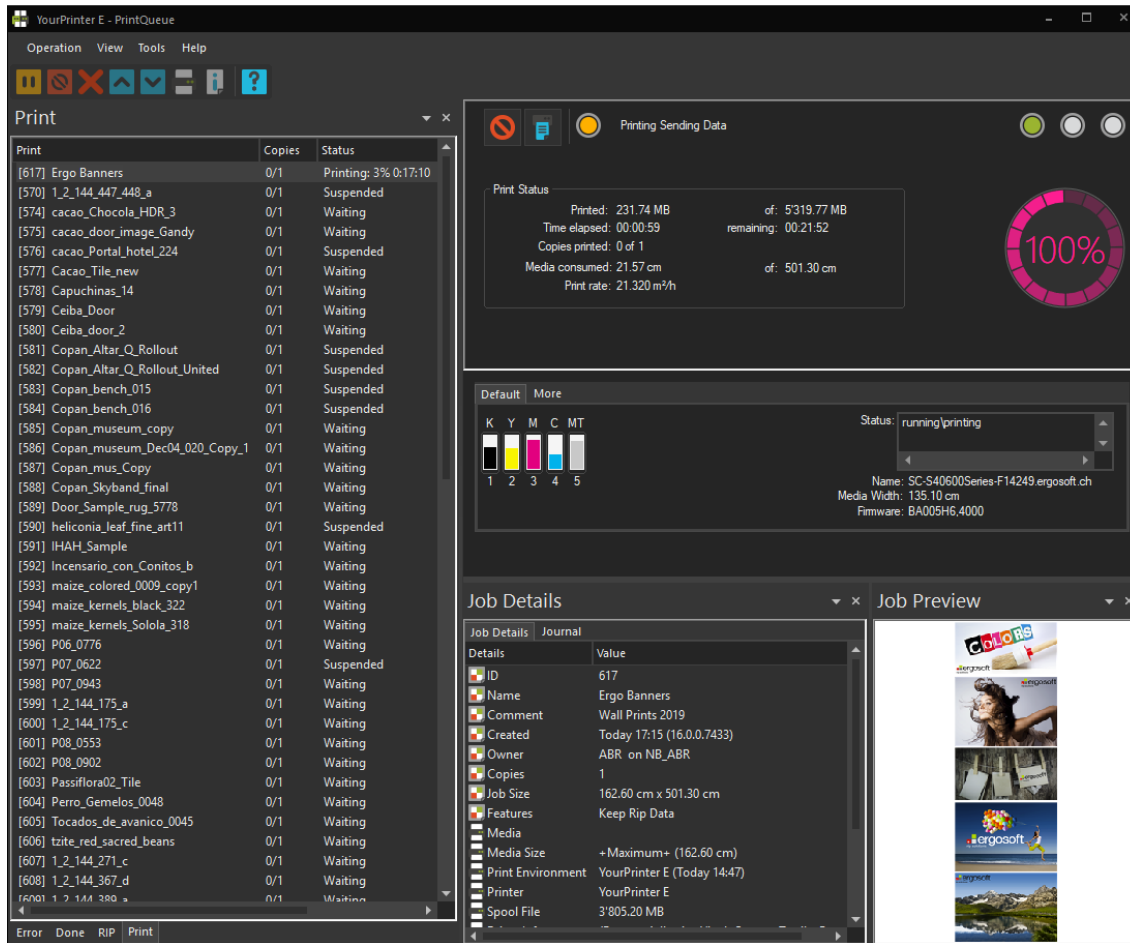
A dropdown of these JobPresets has been added to the JobComposer.

Combined with the ImagePreset, the JobPreset allows the user to pre-define a job creation, especially useful for repeat jobs and high-running products.

The JobPresets are also available through the Ergosoft Delta XML-Automation Interface.

Queues ^{*NEW}

Details



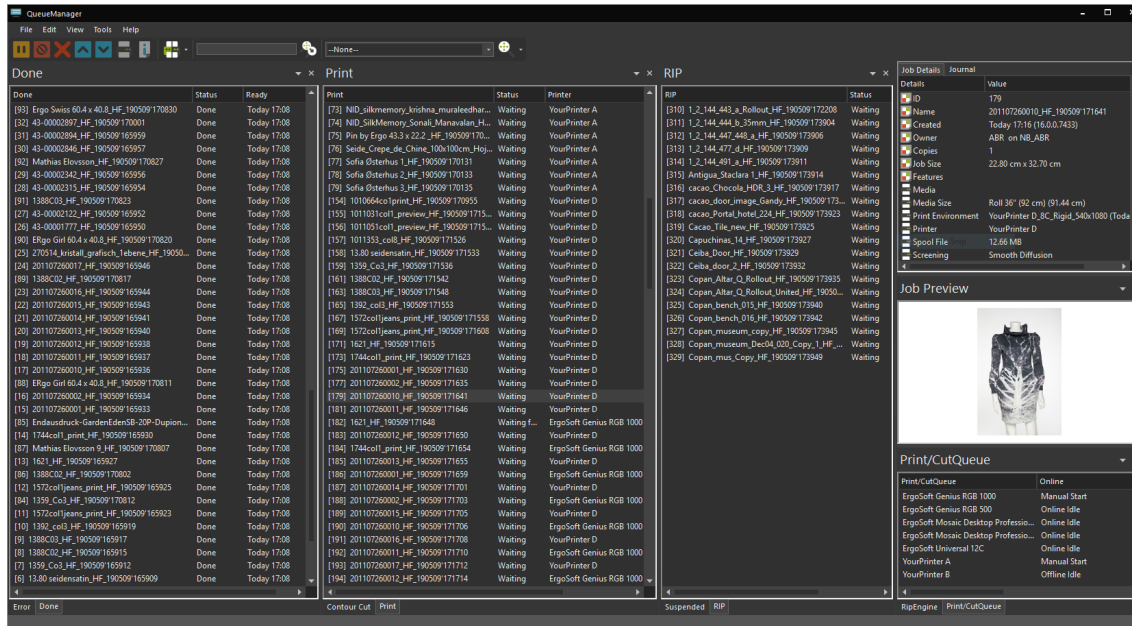
[16.1] The Print- and CutQueues have been completely redesigned.

Feature highlights:

- [16.1] Allows custom workspaces.
- [16.1] Uses pane windows over tiles, which provides a better production overview and job management.
- [16.2] Support of advanced custom filter for various queries ^{*new}
 - By media
 - By time range
 - By text string
 - Supports quick keyword search ^{*new}
- [16.3] Shows a counter of the number of jobs on each queue tab ^{*new}

QueueManager *NEW

Details



[16.1] The JobCenter has been replaced by the newly designed QueueManager.

- Allows custom workspaces. *new
- Uses pane windows over tiles, which provides a better production overview and job management. *new

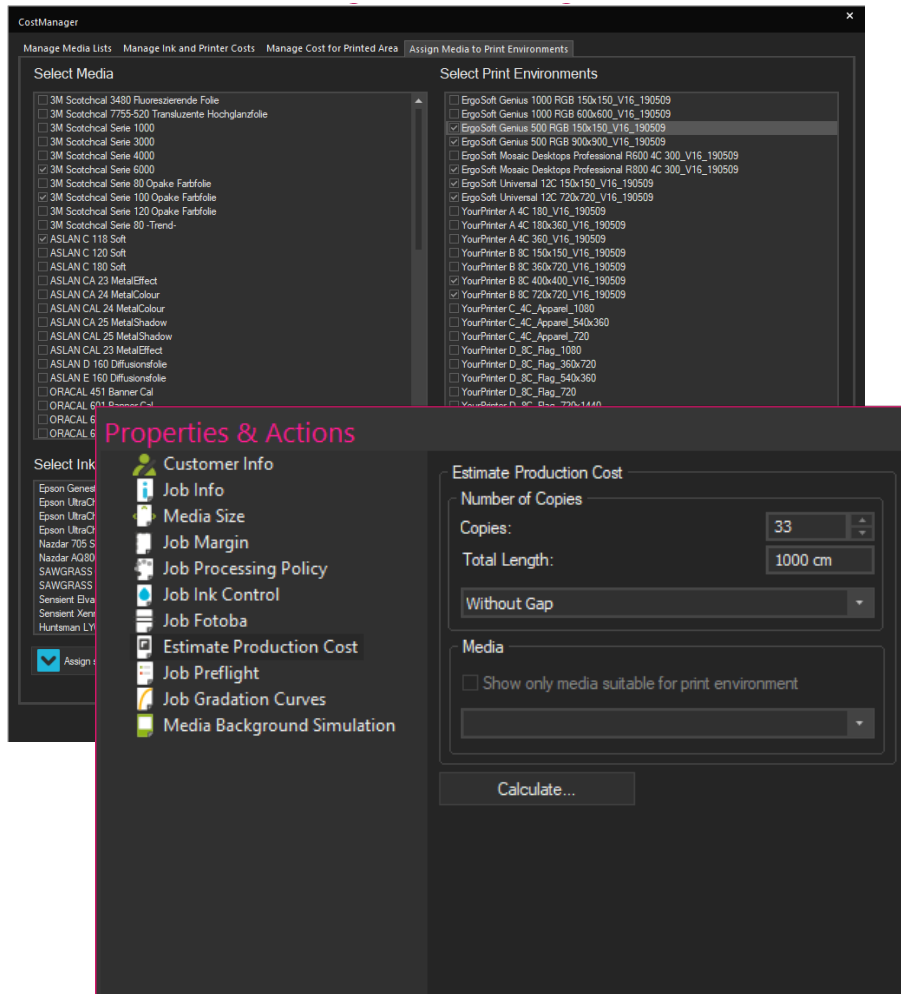
Especially powerful when multiple printer and cutters are connected to one system, or if it is a network Sequoia setup.

- [16.3] Shows a counter of the number of jobs on each queue tab *new
- Besides production overview, the QueueManager can optionally replace the use of Print and CutQueues entirely. One tool – the QueueManager – can be used for the actual job processing management.
- Supports advanced custom filter for various views. *new
- By printer or cutter
- By media
- By Print/CutQueue station
- By time range
- By text string
- Extended production data export functionality *new



Job Costs ^{*NEW}

Details



Job cost configuration, estimation and calculation has been redesigned and enhanced. New tools have been added.

[16.1] CostManager: Allows for the administration of production cost parameters of the cost estimation and calculation. ^{*new}

- Through bulk-editing of ink, media and Print Environment assignments, it makes this administration extremely fast.
- Accessible through the ControlCenter and the JobComposer
- Import material lists and costs for ink and media.

[16.4] Extended Production Database: New job production metrics (aborted Jobs, active Ergosoft User, media usage ratio, media shrinkage factor) are going to be generated and stored. ^{*new}

[16.1] Estimate Production Cost: A new Job Property within the JobComposer that generates estimation reports of the job's production costs. ^{*new}

- Optional: Print Cost Calculation based on m2 per hour over time spent for a job ^{*new}

[16.1] Job Preflight: Allows user to generate numerous variations of preflights. ^{*new}

[16.1] Customer List: A new list import functionality allows the user to import the customer data of third party databases (e.g. CRM/ERP/..).

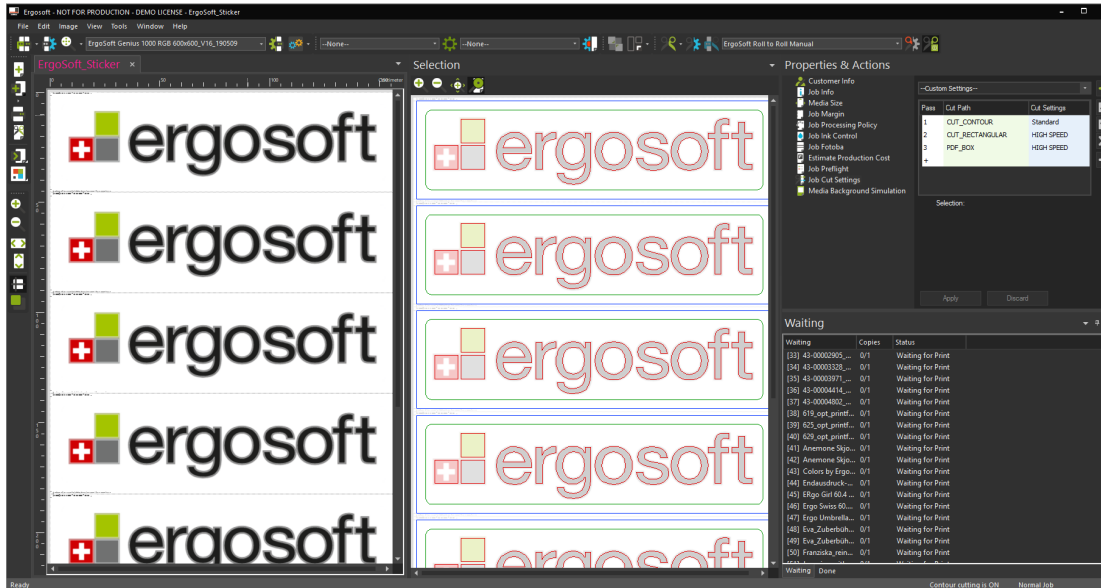
[16.1] Customer Currency and New Metrics:

A custom currency can be selected, as well as the unit for ink amount calculation can be customized.



Print and Cut Workflows

Details



- [16.1] Smart Bleed & Cut Lines: Allows the generation of contour bleed and contour (cut) lines, based on the image contour***new**
- [16.1] The Print and Cut workspace has been reworked and improved.
- [16.1] The Live-Cut-Path preview has been improved.
- [16.1] New cut paths are supported
 - PDF boxes ***new**
 - Adobe Photoshop paths ***new**
 - “Bounding Boxes” of grouped images ***new**



Production & Workflow

Details

HotFolder Improvements

[16.1] Jobs can be automatically released and processed based on Job length, a time-driven trigger, or a combination thereof. **new*

The management of the temporary data handling has been improved and allows more user control.

[16.2] New functionality to export/import HotFolder parameters to efficiently clone existing HotFolders based on identical or similar settings. **new*

[16.4] The module user interface has been converted to Tabbed Groups framework supporting groups and floating HotFolder windows and recent windows arrangement recovery. **new*

[16.4] Support of Drag&Drop has been implemented. **new*

[16.4] The feature scope and error handling of the optional automation interface to the HotFolder called <delta> XML has been extended.

Add-Ons and Job Elements

[16.3] The Image Add-Ons and generated Job Elements of the JobComposer have been updated and enhanced. Feature highlights:

- Frequently used Job Elements and customized settings can be stored as presets. **new*
- New barcode types are supported (128; EAN-13; European Article Number). **new*
- All barcodes can be rotated. **new*
- An optional and additional barcode module allows to generate the barcode content automatically based on the file name syntax. **new*
- Additional available Add-Ons can be installed through the JobComposer directly. **new*
- A new Job Element Fotoba Marks is available. **new*



Production & Workflow

Details

Job Ticket

[16.3] The HTM Job Ticket, accessible through the QueueManager and/or PrintQueues, has been entirely revised and extended.

Feature highlights:

- Numerous new relevant production details of the printed Job have been added. *new
- Job Barcode content is listed (human readable) and added as generated barcode. *new
- Reports about Job Costs are listed more detailed.

Job Package *new

[16.3] A functionality called Package Job has been added to the file menu of the JobComposer.

Feature highlights:

- Saves the job file in a new folder including all relevant files.
- Generates and saves a Job Ticket (HTM) and a preview image (JPG) within the same folder.

Ergosoft Mosaic Desktops Professional in Cooperation with ZEDOnet *new

[16.1] Together with the company ZEDOnet the Ergosoft Mosaic Desktops Professional driver series has been added. This widens the printer driver range by roundabout 300 new desktop models of major brands. Based on a Contone-interface it allows to run these printers in the native color spaces (CMYK++).





Usability

Usability Summary

ControlCenter

[16.1] The Ergosoft 16 ControlCenter gives the user access to all main modules of an Ergosoft RIP and allows to manage their settings within one tool. The ControlCenter replaces the “Startup Manager” from previous versions.

SystemGuard

[16.2] With the SystemGuard tool set, Ergosoft 16 introduces various new features and routines to backup relevant files, observe available disk space and to cleanup temporary data.

Online Customer Documentation Portal

The extensive technical documentation, including additional multimedia content, is available online through the Ergosoft Documentation Portal.

Print & Cut Environment Wizard

[16.1] A new wizard guides the user through the two main scenarios:

Adding a new Print/Cut Environment including a new Queue.

Adding a new Print/Cut Environment based on an existing Queue.

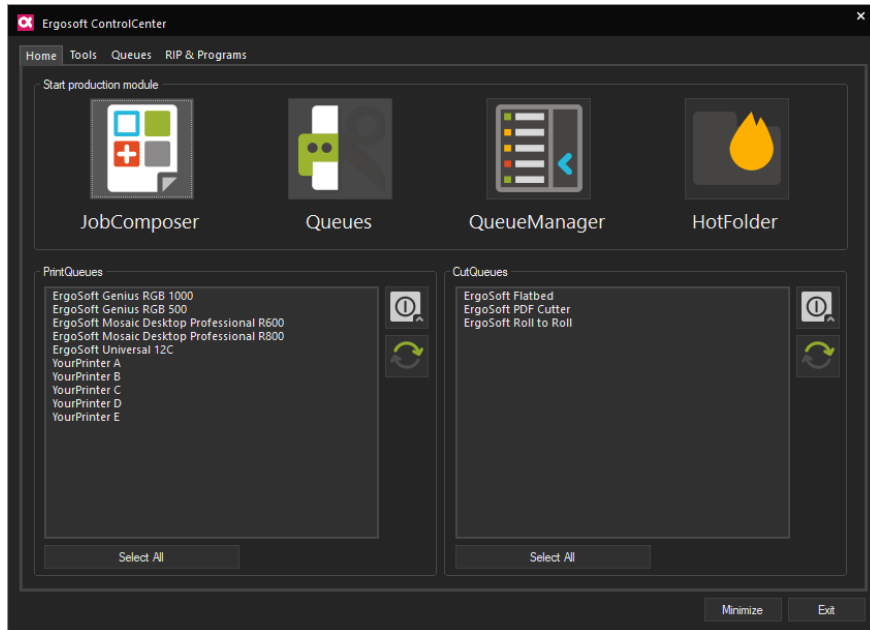
Floating Licensing / Network Dongle

The floating licensing allows the dynamic controlling of available site-licenses through one, centralized physical Ergosoft dongle in a local network.



ControlCenter ^{*NEW}

Details



[16.1] The new ControlCenter replaces the Startup Manager.

Feature highlights:

Home tab - Allows the access to all main production modules of an Ergosoft RIP:

- JobComposer
- Print and CutQueues
- QueueManager
- HotFolder

Tools tab - Allows direct access to all important additional tools of an Ergosoft RIP:

- CostManager
- Access Rights
- Maintenance Tool
- Album

Queue tab - Allows the setup and advanced start configuration of all Print- and CutQueues.

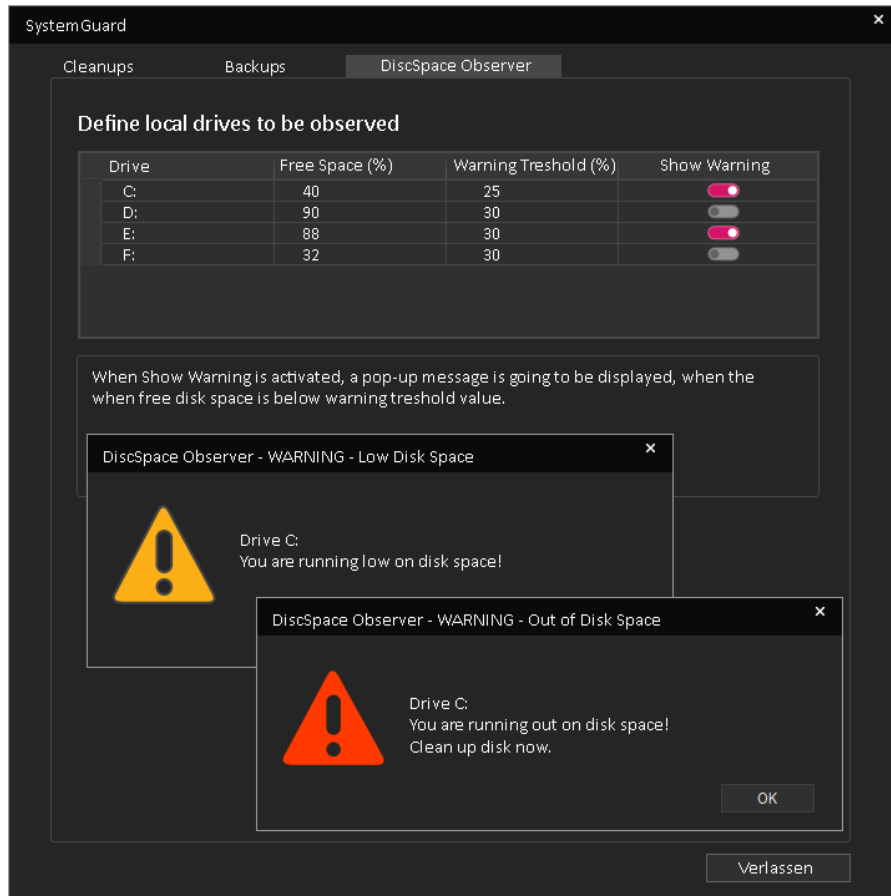
RIP & Programs tab - Allows the configuration of:

- RipEngines
- Optional features
- Start options of the ControlCenter itself



SystemGuard ^{*NEW}

Details



[16.2] Accessible via “Tools” in the ControlCenter, the SystemGuard utility introduces the following features to backup relevant files, observe available disk space and to delete temporary data:

- **Cleanup:** Manual and auto-cleanups of temporary files.
- **Backup:** Manual and auto-backup of relevant RIP system files.
- **DiskSpace Observer:** Observes all local drives and warns, if disk space falls too low.

Environment Setup ^{*NEW}

Details

The image displays four sequential screenshots of the 'Environment Setup' wizard, numbered 1 through 4 in pink circles.

- Screenshot 1: Add new Environment**
This window shows the initial step with two main options: 'Add Queue' (Add environment with new queue) and 'Use Queue' (Add environment for existing queue). Navigation buttons at the bottom include '< Back', 'Next >', and 'Cancel'.
- Screenshot 2: Select Printer Driver**
This window shows a list of printer drivers under the 'ErgoSoft' category, including 'ErgoSoft Mosaic Desktops Basic' and 'ErgoSoft Mosaic Desktops Professional'. A 'Filter driver list' button is visible. Navigation buttons at the bottom include '< Back', 'Next >', and 'Cancel'.
- Screenshot 3: Edit Queue Setup**
This window shows detailed configuration for the queue. It includes fields for 'Port' (Specify a Port for Data Output), 'Folder for Spool Files', 'Cost Factor' (USD per h), and 'Start mode' (Offline, Online, Manual Start). There are also checkboxes for 'Start minimized'. Navigation buttons at the bottom include 'Next >' and 'Cancel'.
- Screenshot 4: Name for New Environment**
This window shows the final naming step. It includes fields for 'New Environment Name', 'New Queue Name', and 'Queue Description'. Navigation buttons at the bottom include 'Back', 'Finish', and 'Cancel'.

[16.1] Wizard for the Generation of Print and Cut Environments and Queues. ^{*new}

A new user-friendly wizard for the generation of Print and Cut Environment, including or excluding the setup of a Print/CutQueue has been implemented.

Usability

Details

Online Documentation Portal *new

The technical documentation has been rewritten and is available on the Online Ergosoft Documentation Portal.

Feature highlights:

- Documentation versioning allows to update technical documentation on the fly.
- Multimedia content available.
- [16.3] A complete shortcut table has been added to the Online Documentation Portal.

Floating Licensing *new

The floating licensing optionally allows to use one physical dongle, accessible for all Ergosoft RIP stations in a network.

All licenses are centrally managed by one license server.

Miscellaneous *new

[16.1] Scalable file import and file open dialog including high quality image preview pane has been added.

[16.2] Job Processing Policies have been redesigned, integrated in a more accessible location and feature new functionalities concerning auto-archiving and deletion.

[16.2] Various list management and complex color list dialogs have been converted into resizable windows.

[16.3] New shortcuts have been implemented to the JobComposer:

- **Ctrl+C and Ctrl+P:** Copy & Paste of selected images between jobs
- **Arrow Up / Down / Left / Right:** Move selected images within the job
- **Ctrl+Shift+S:** Save active job as
- **Ctrl+Shift+W:** Close all active jobs





Color & Color Control



Color & Color Control

Summary

SwatchBook

[16.1] Ergosoft 16 supports the PANTONE® Color Systems and the [16.3] Coloro Codebook.

Other new features including:

- [16.1] Color deviation / (dE) prediction
- [16.1] Search closest color by color value
- [16.1] Print and store blends of similar colors
- [16.2] Generation of Lab/LCH color books allows to use Uniform Perceptual Lab (UP Lab) instead of CIE Lab.

SwatchMatcher *new

[16.2] The SwatchMatcher allows to capture existing output of company color books printed with third-party solutions and to generate a SwatchBook in Ergosoft 16 to mimic previous color results.

Color Replacement

[16.1] In addition to the Named Colors, automatic Spot Color Replacement can now be established through assignments of complete SwatchBooks.

[16.1] A tolerance value has been added to various color replacement functionalities.

ColorEqualizer *new

[16.2] This new toolset helps the user to align color results of multiple Print Environments for various use-case scenarios. It also supports capturing existing linearization output of third-party solutions or previous production.



Color & Color Control

Summary

Gamut Warning as Thematic Map *new

[16.2] Toggle between the monochrome gamut warning and a new gamut warning based on color steps to indicate the expected color deviation of the actual printing result. Thresholds can be user-defined.

Target Printer Simulation

[16.1] Easier to find as a new Image Property & Action.

[16.1] Assigns an output simulation profile to images for color proofing/simulation purposes.

Improved EPS/PDF Preview

[16.1] A new preview pane within the JobComposer shows a more accurate color preview of the file formats PS/EPS and PDF applying the input – intermediate – output color spaces and rendering intents.

GrayTuner *new

[16.3] A new Profile Editor feature called GrayTuner allows the user to customize the tint of the gray axis of the generated printer profile of ColorGPS. Controls to set the custom tint (in terms of hue) and to adjust the intensity of this custom tint are available.

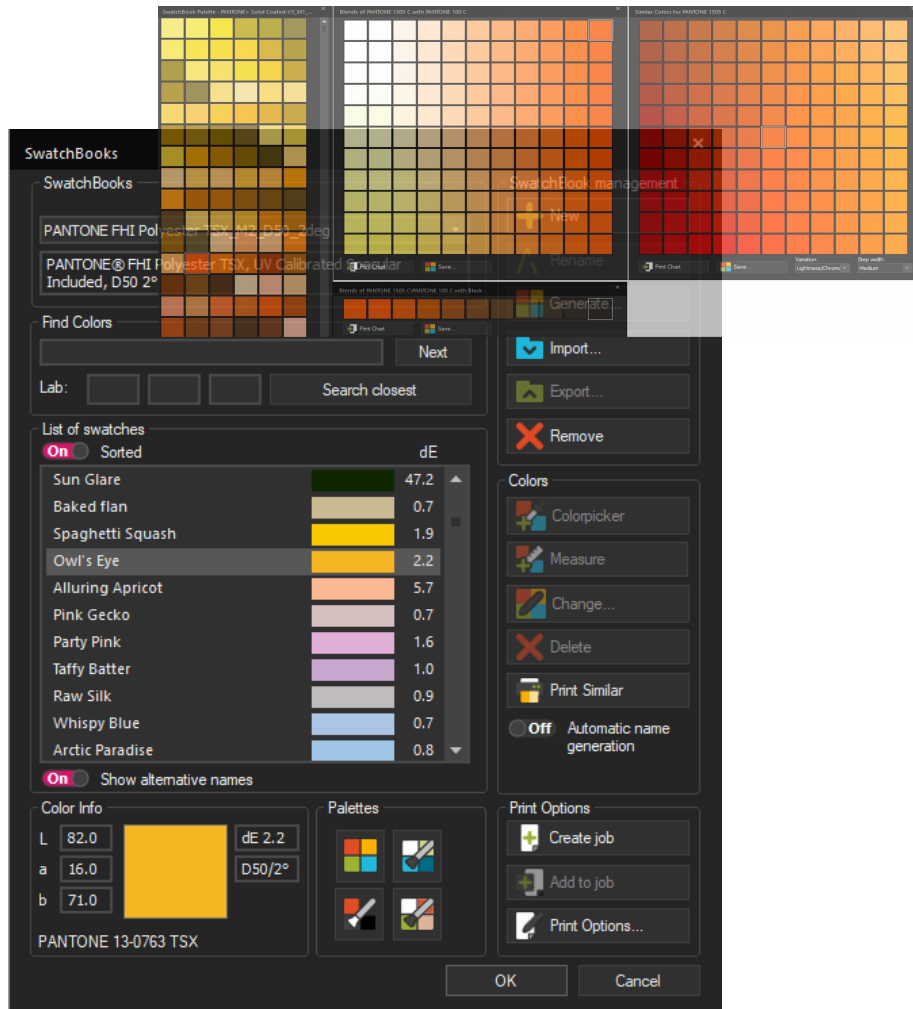
Density Linearization

[16.1] New industry standards and advanced custom absorption curves are supported. The density linearization wizard has been refined.



SwatchBook

Details

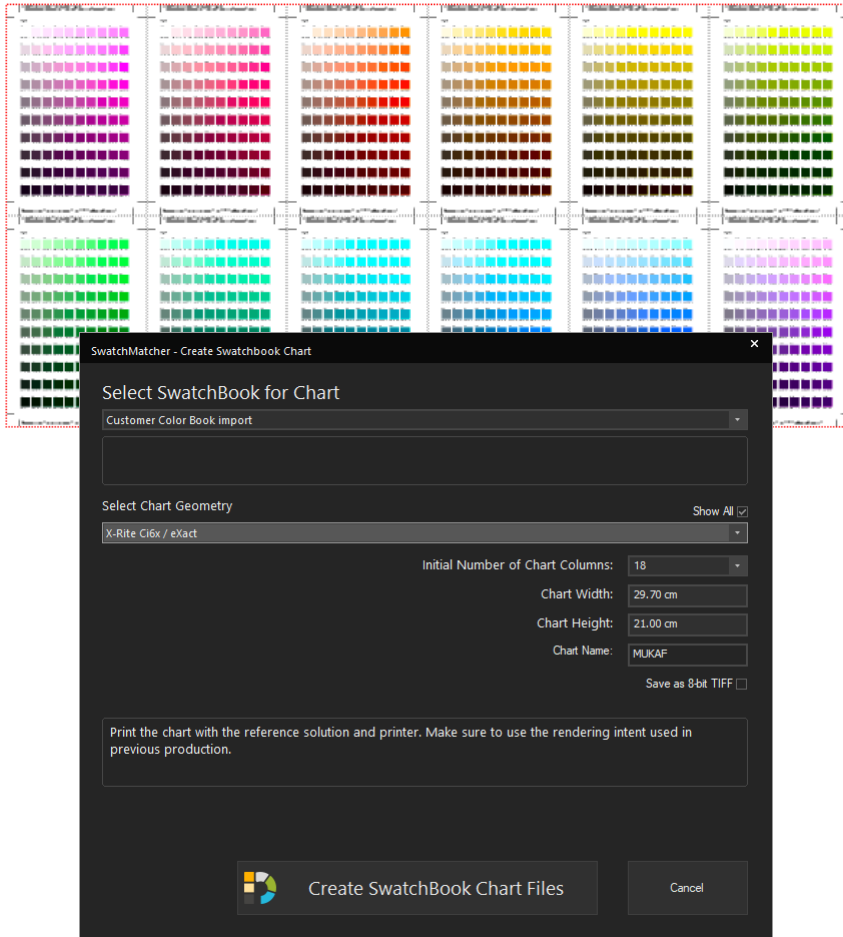


- [16.1] A new XML-based format allows the storage of more color-relevant information in a color book and also to display them in the SwatchBook feature: **new*
 - Details about light standard
 - SwatchBook description
 - Optional second color swatch name
- [16.1] PANTONE ® Color Systems INCLUDED **new*
- [16.1] dE predictions are shown in the color list of SwatchBook. **new*
- [16.1] A new search function by color value (Lab) allows to search for the closest match within the color list of a SwatchBook.
- [16.1] Palettes and Blending tools:
 - Extensively revised.
 - Allow to be directly printed through the Palette windows. **new*
 - Allow to be stored as a new SwatchBook through the Palette windows. **new*
 - A new Palette window has been added, which presents color variation of a swatch selection:
 - Based on lightness and hue **new*
 - Or based on saturation and hue **new*
 - Color steps can be user-defined **new*
- [16.2] SwatchBooks can be generated using Uniform Perceptual Lab (UP Lab) instead of CIE Lab **new*
- [16.2] All SwatchBook dialogs are resizable now **new*



SwatchMatcher ^{*NEW}

Details

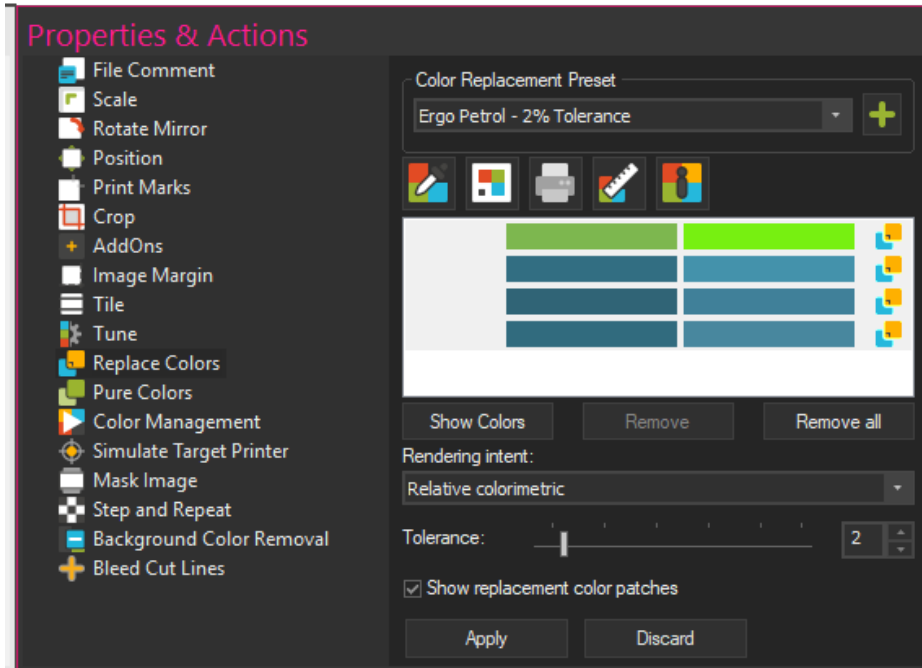


[16.2] The SwatchMatcher allows to capture color books printed with third party solutions through:

- Generation of a target measurement chart (TIFF Lab, 16-bit or 8-bit) based on a color book import.
- Measuring the chart printed with the third-party solution.
- Generation of a SwatchBook in Ergosoft 16 to mimic the existing color book printout.

Color Replacement

Details

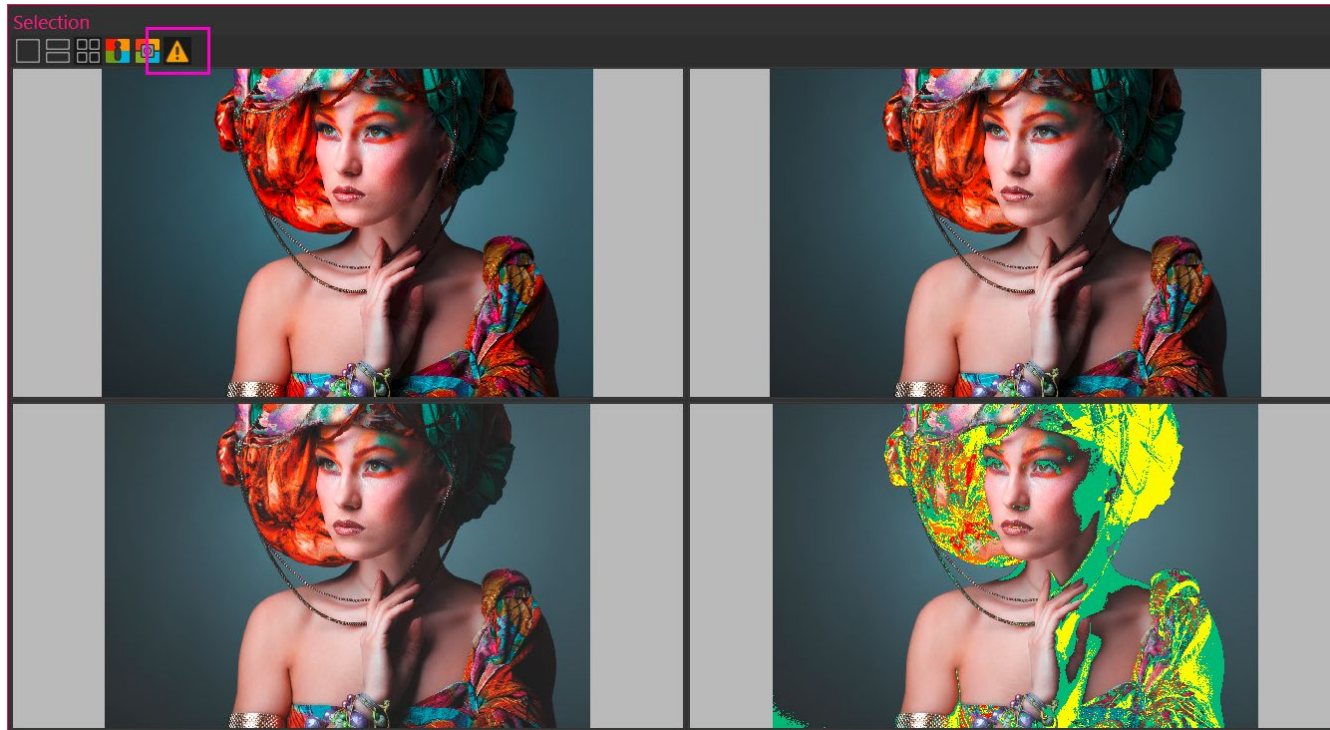


[16.1] A new function allows the automatic color replacement based on color names (Spot Colors). Complete SwatchBooks can be used in the Image Property, but as well within the ImagePreset. **new*

[16.1] A tolerance value has been added to all color replacement functionalities based on an input color value including Pure Colors. **new*

Gamut Warning as Thematic Map ^{*NEW}

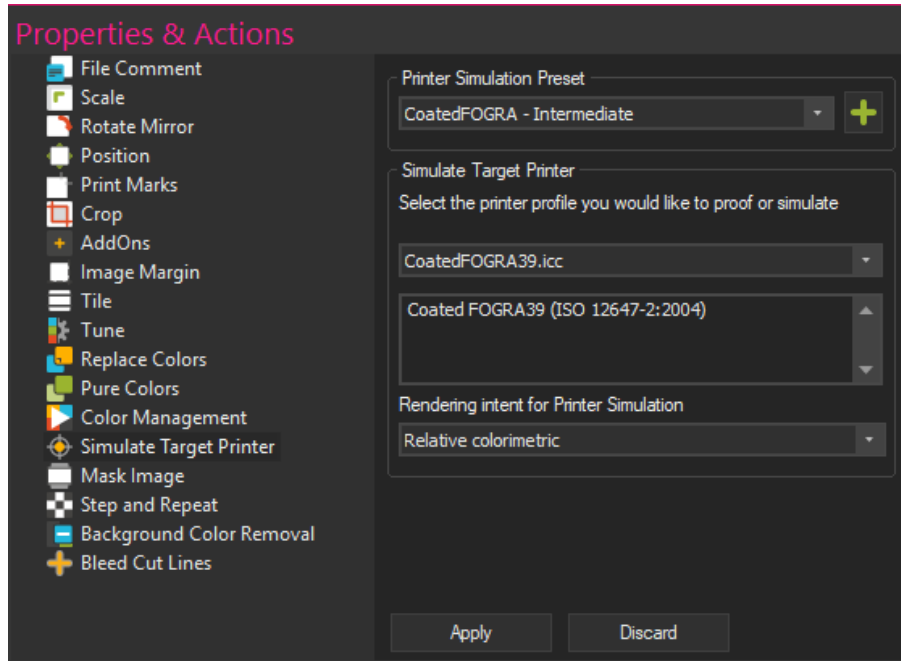
Details



[16.2] Toggle between the monochrome (green gamut warning color) and a new gamut warning using four colors (green, yellow, orange, red). The thresholds for the levels can be defined under User Preferences.

Target Printer Simulation ^{*NEW}

Details

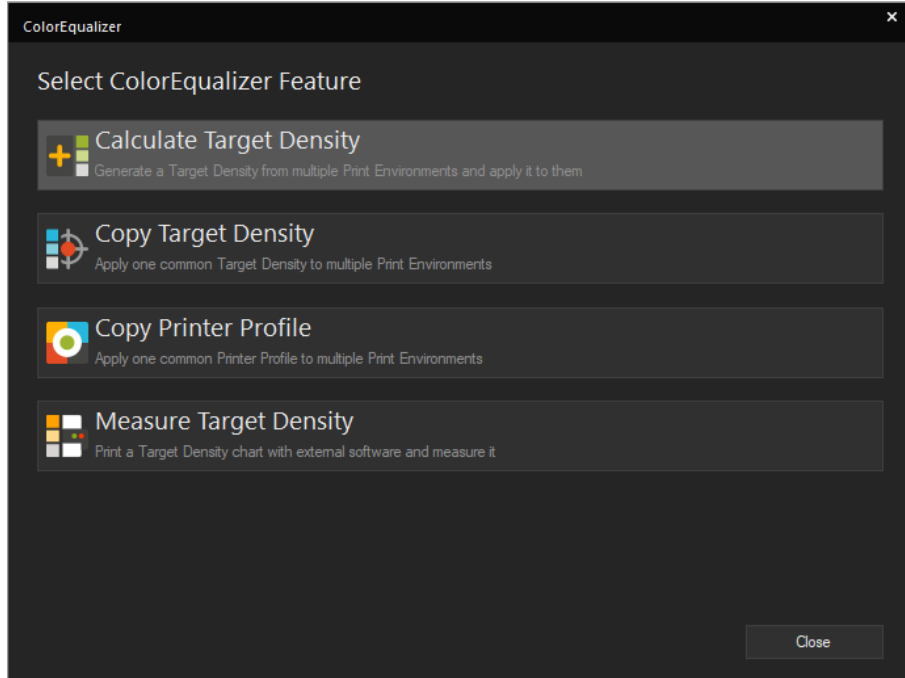


[16.1] A new centralized Image Property called Simulate Target Printer within the JobComposer allows the user to assign a proofing profile and rendering intent for image placed in the Jobs.



ColorEqualizer ^{*NEW}

Details



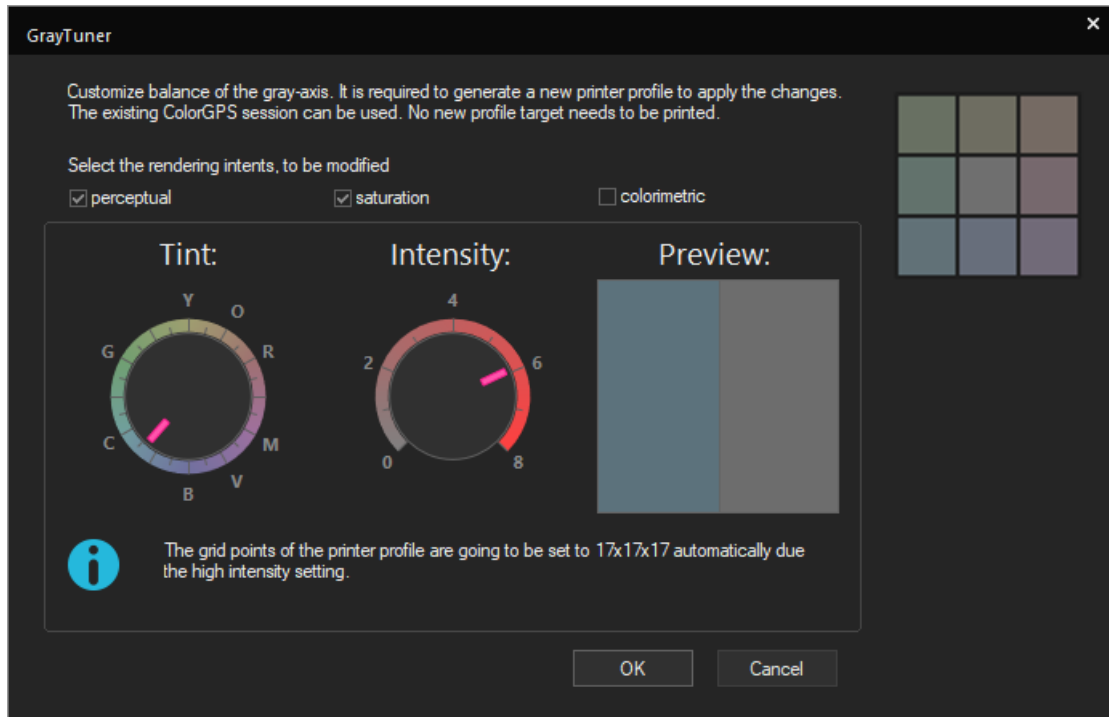
[16.2] In order to align color output, a new toolset has been added, which features the following tools:

- Auto-generate and apply a Target Density for/to a selection of Print Environments.
- Bulk-assignment of existing Target Density (Ergosoft or third-party) to a selection of Print Environments.
- Bulk-assignment of a printer profile to a selection of Print Environment.
- Capturing of existing density output of an existing printing solution and generation of a Target Density, which mimics the existing density output.



GrayTuner ^{*NEW}

Details



[16.3] A new Profile Editor feature called GrayTuner allows the user to customize the tint of the gray axis of the generated printer profile of ColorGPS. Controls to set the custom tint (in terms of hue) and to adjust the intensity of this custom tint are available.

Color & Color Control

Details

Improved Color Preview for EPS and PDF *new

[16.1] A newly developed functionality within the JobComposers renders an improved preview of EPS and PDFs, respecting input-, output, intermediate profiles and rendering intents selected. This preview is being displayed in a preview pane of the JobComposer.

Density Linearization – Density Status *new

[16.1] The default Density Status E has been updated to the latest norm. Optionally, there are newly also Status T (accepted standard in the United States) and other filters available.





UI Redesigns



UI Redesigns

Summary

Almost all user interfaces within modules, windows and wizards have been refined.

Focus:

- [16.1] Easy accessibility
- [16.1] Greater consistency
- [16.1] Improved usability
- [16.2] Resizable windows
- [16.4] Support of Windows HighDPI user interface scaling

Visually direct comparisons between the previous version and Ergosoft 16 illustrate this concept

Main dialogs this concerns:

- Job Properties and Actions
- Image Properties and Actions
- Print and Cut Environment management dialog
- New shortcuts have been added to the JobComposer
- Image replacements supported by keyboard arrow keys
- Default workspaces optimized
- Application defaults
- ImagePresets



Mask Image

Version 15

Properties

- File Comment
- Scale
- Rotate Mirror
- Position
- Print Marks
- Crop
- AddOns
- Image Margin
- Tile
- Tune
- Replace Colors
- Pure Colors
- Color Management
- Mask Image**
- Step And Repeat
- Background Color Removal
- Bleed Cut Lines

Mask Image Preset
--None-- +

Open

Channel Rotate

Extend Mode ☐ Invert

☐ Ignore Image Alpha Channel

☐ Scale and Offset relative to Image

Scale % %

Offset % %

☐ distort

Apply Discard

Version 16

Properties & Actions

- File Comment
- Scale
- Rotate Mirror
- Position
- Print Marks
- Crop
- AddOns
- Image Margin
- Tile
- Tune
- Replace Colors
- Pure Colors
- Color Management
- Simulate Target Printer
- Mask Image
- Step and Repeat
- Background Color Removal
- Bleed Cut Lines

Mask Image Preset
Mask - 200cm - Square +

Mask Selection and Mode
C:\Users\ABR\Desktop\Mask_200_Square.tif

Channel

Extend Mode ☒ Invert

Mask Options

☒ Scale and Offset relative to Image

Scale % %

Offset % %

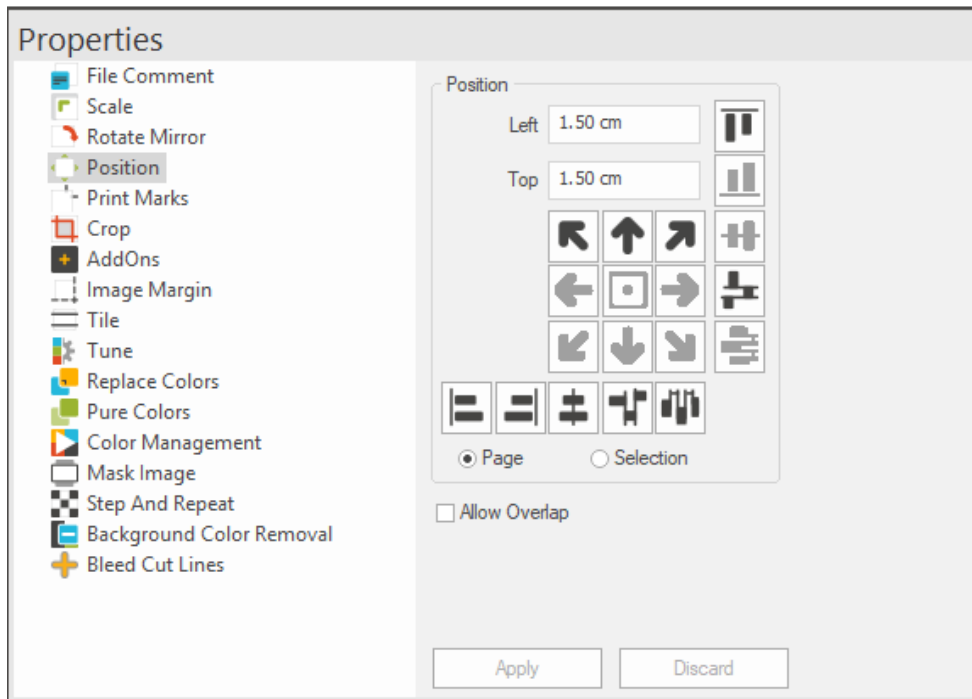
☐ distort Rotate

☐ Ignore Image Alpha Channel

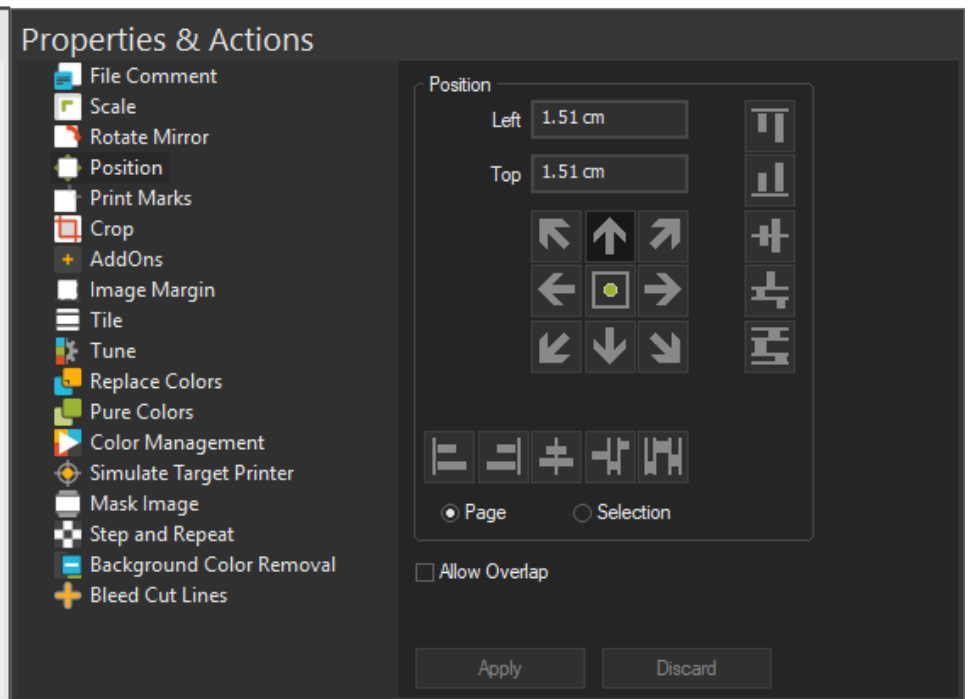
Apply Discard

Position

Version 15

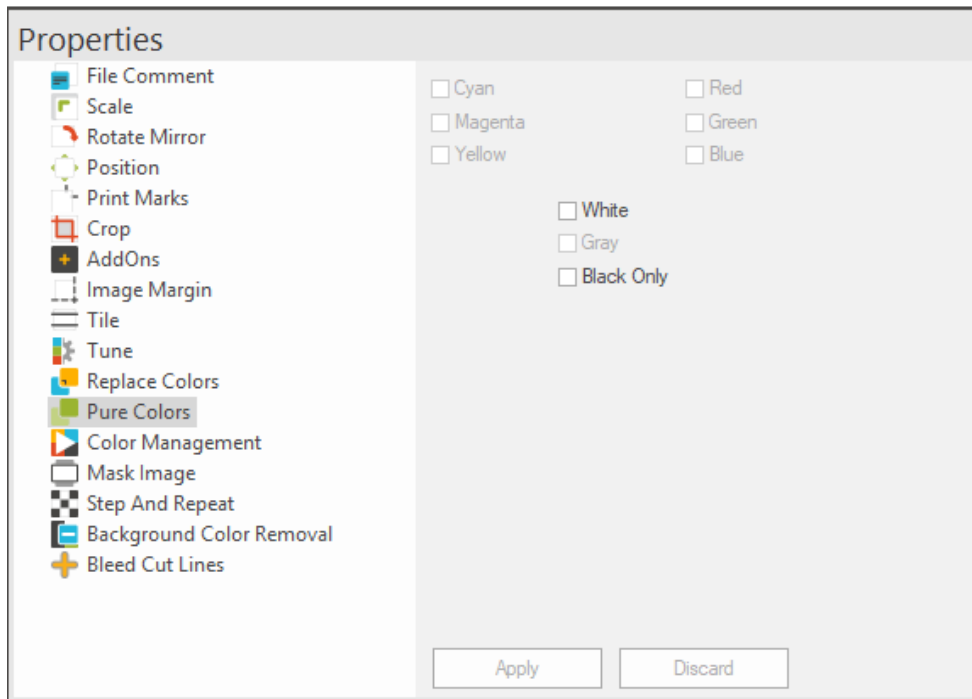


Version 16

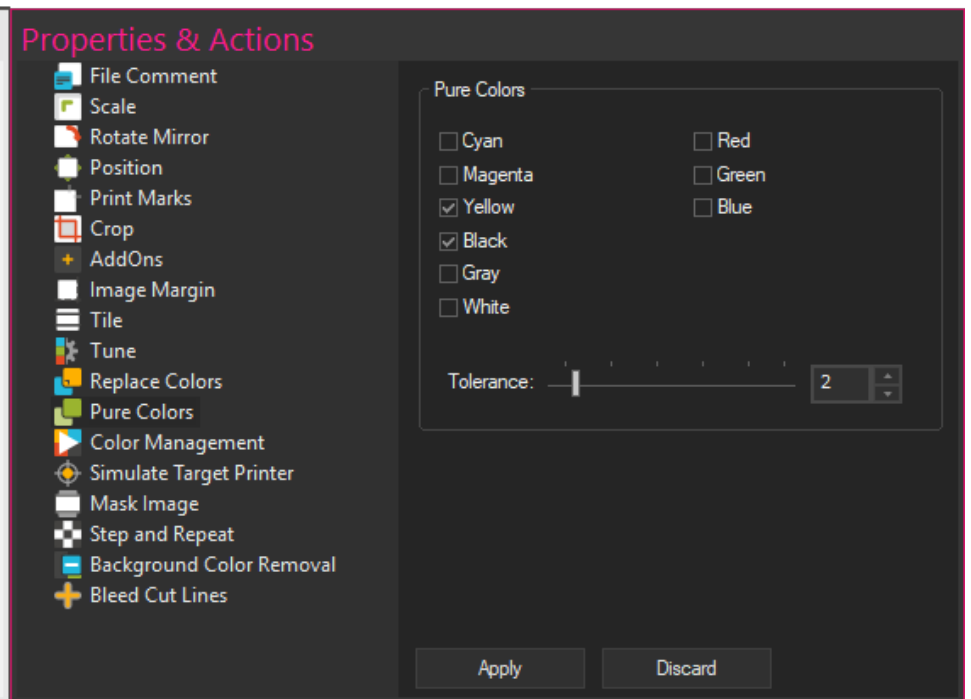


Pure Colors

Version 15

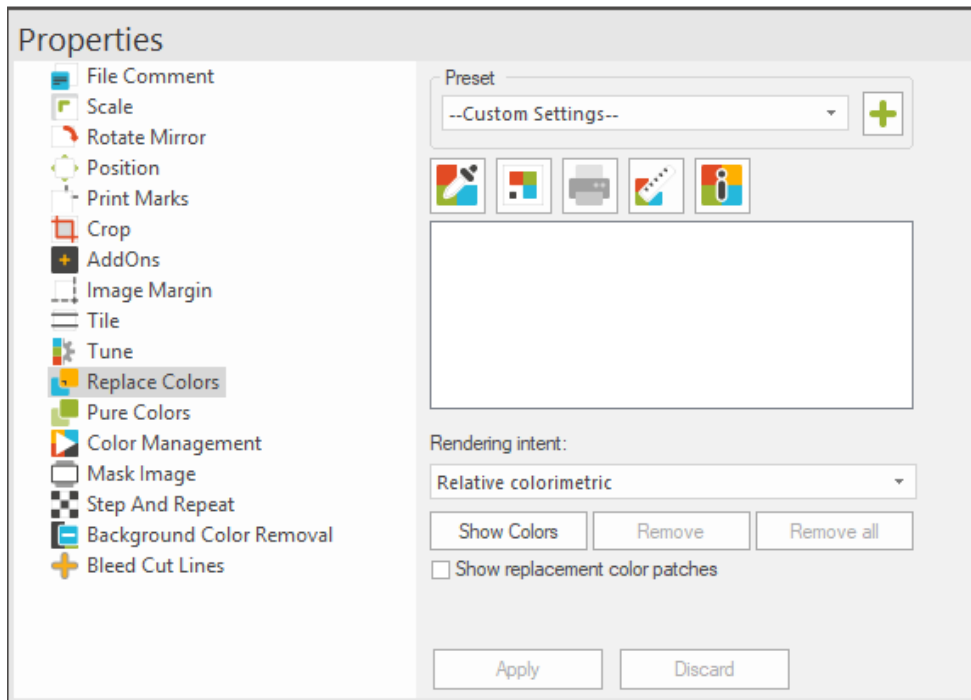


Version 16

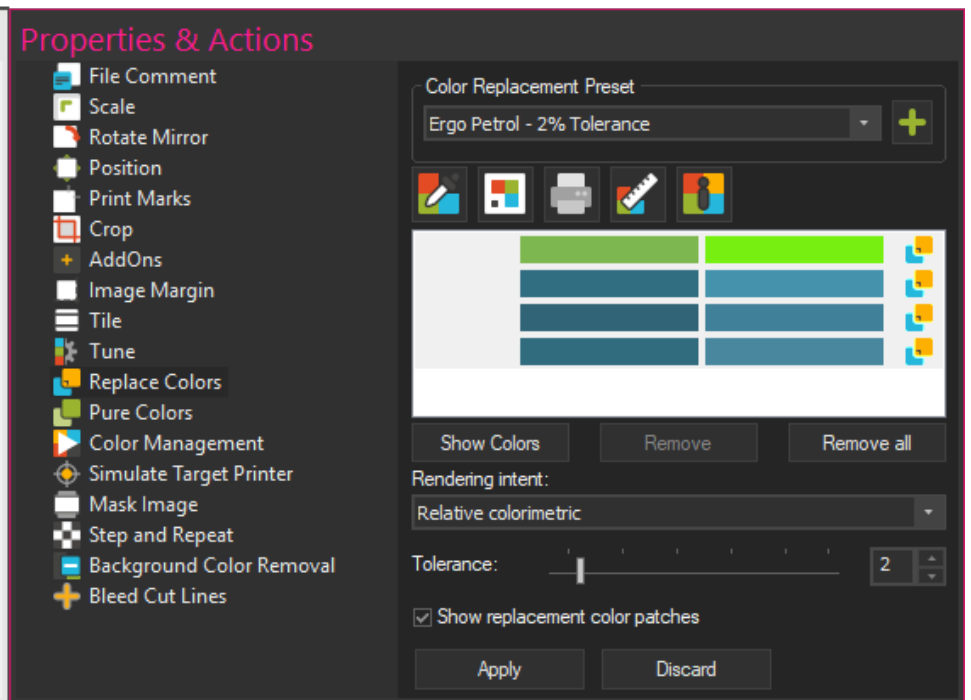


Color Replacement

Version 15



Version 16



Spot Color Replacement

Version 15

Properties

File Comment

Scale

Rotate Mirror

Position

Print Marks

Crop

AddOns

Image Margin

Tile

Extra Channels

Pure Colors

Replace Spot Colors

Color Management PS/EPS

Mask Image

Step And Repeat

Background Color Removal

Bleed Cut Lines

PANTONE 3596 C

PANTONE 2428 C

PANTONE 2430 C

PANTONE 2431 C

PANTONE 2432 C

PANTONE 2433 C

Rendering intent:

Relative colorimetric

Remove

Remove all

Apply

Discard

Version 16

Properties & Actions

File Comment

Scale

Rotate Mirror

Position

Print Marks

Crop

AddOns

Image Margin

Tile

Pure Colors

Replace Spot Colors

Color Management PS/EPS

Simulate Target Printer

Mask Image

Step and Repeat

Background Color Removal

Bleed Cut Lines

Color Replacement Preset

Auto - PANTONE Solid Coated - SwatchBook

PANTONE 3596 C

PANTONE 2428 C

PANTONE 2430 C

PANTONE 2431 C

PANTONE 2432 C

PANTONE 2433 C

Remove

Remove all

Rendering intent:

Relative colorimetric

☒ PANTONE + Solid Coated-V3_M1_D50_2deg

☐ PANTONE FHI Cotton TCX_M2_D50_2deg

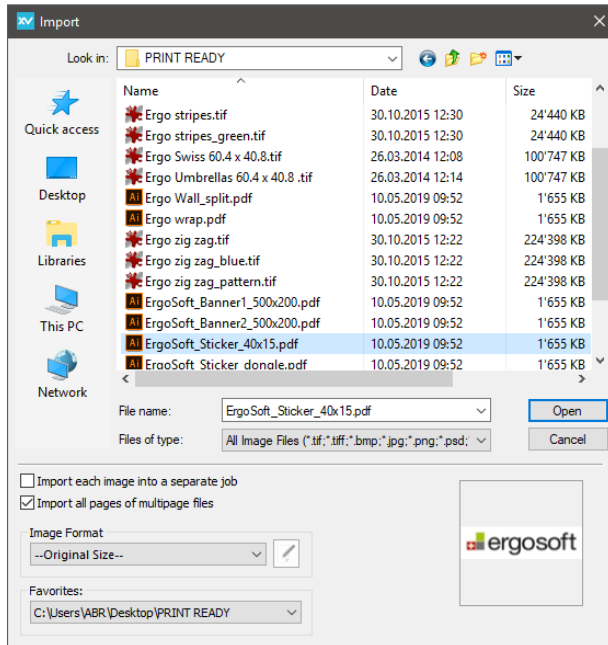
☐ PANTONE FHI Polyester TSX_M2_D50_2deg

Apply

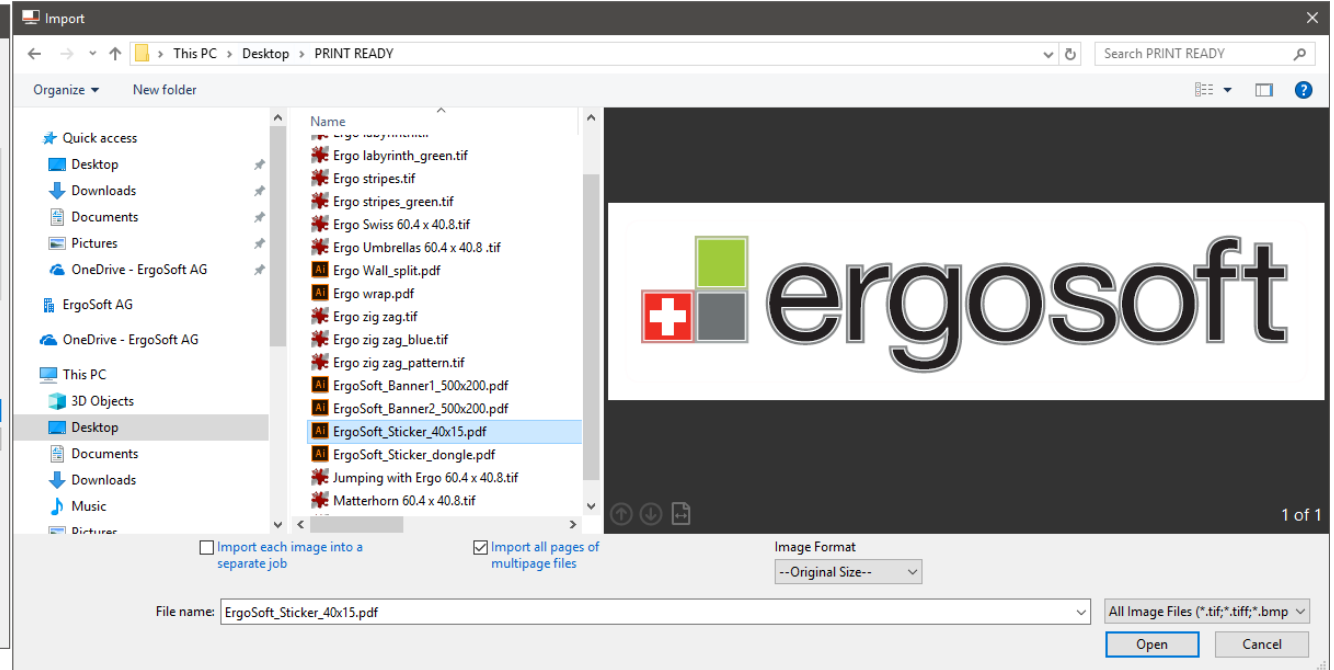
Discard

File Import

Version 15 - File Import



Version 16 - File Import





Ergosoft 16

